



Stillwater
AREA PUBLIC SCHOOLS

SCHOOL ANALYTICS REPORT



TeamWorks
International
Trusted. Proven. Unique.

January 24, 2023

AGENDA

Introduction

Key Findings

Community Demographics

District Demographics

Potential Growth Factors

Enrollment Projections

Enrollment: Areas of Concern

Key Messages

INTRODUCTION

School Analytics Services are designed to provide the Office of the Superintendent with data and analysis for its mid-long range *Strategy Work* in pursuit of Excellence in Management.

Elements of School Analytics Services are useful to a School Board in its *Governance Work* in pursuit of Excellence in Governance, most notably:

- *District Policy development*
- *District Long Range Planning*
- *Operational Oversight*
- *Facilities Planning and Development*
- *Public Engagement*

PRIMARY GOALS OF PRESENTATION

To inform the school board and public

To generate school board discussion now and near future

To develop insight into options and opportunities

KEY FINDINGS

- A. The district is projected to grow in school-age population;
inclusive of live birth, current market share, and planned development;
exclusive of increased market share, future development, and generational shift.
 - 0-4 year old population is projected to grow 5.6% to 3,519 by 2027
 - 5-14 year old population is projected to grow 0.5% to 8,667 by 2027
 - All student cohort survival ratios are above 101% (*adding students by new developments*)
 - Student yield from single family homes varies widely across the district
(.25 in Lily Lake / .44 in Brookview)
- B. Housing development is projected to continue to grow in the south and south-east
- C. Student population will continue to grow in diversity, especially multi-race/ethnicity
- D. Market share is 70.2% of student-age population and has been slightly dropping
 - From 2018 – 2022, K-12 market share declined from 72.1% to 70.2% overall
- E. Facility utilization is near capacity in south
- F. District needs to add capacity at the elementary and middle school levels and address known issues in aging facilities
- G. District will need to adjust school attendance boundaries on an ongoing basis

COMMUNITY DEMOGRAPHICS

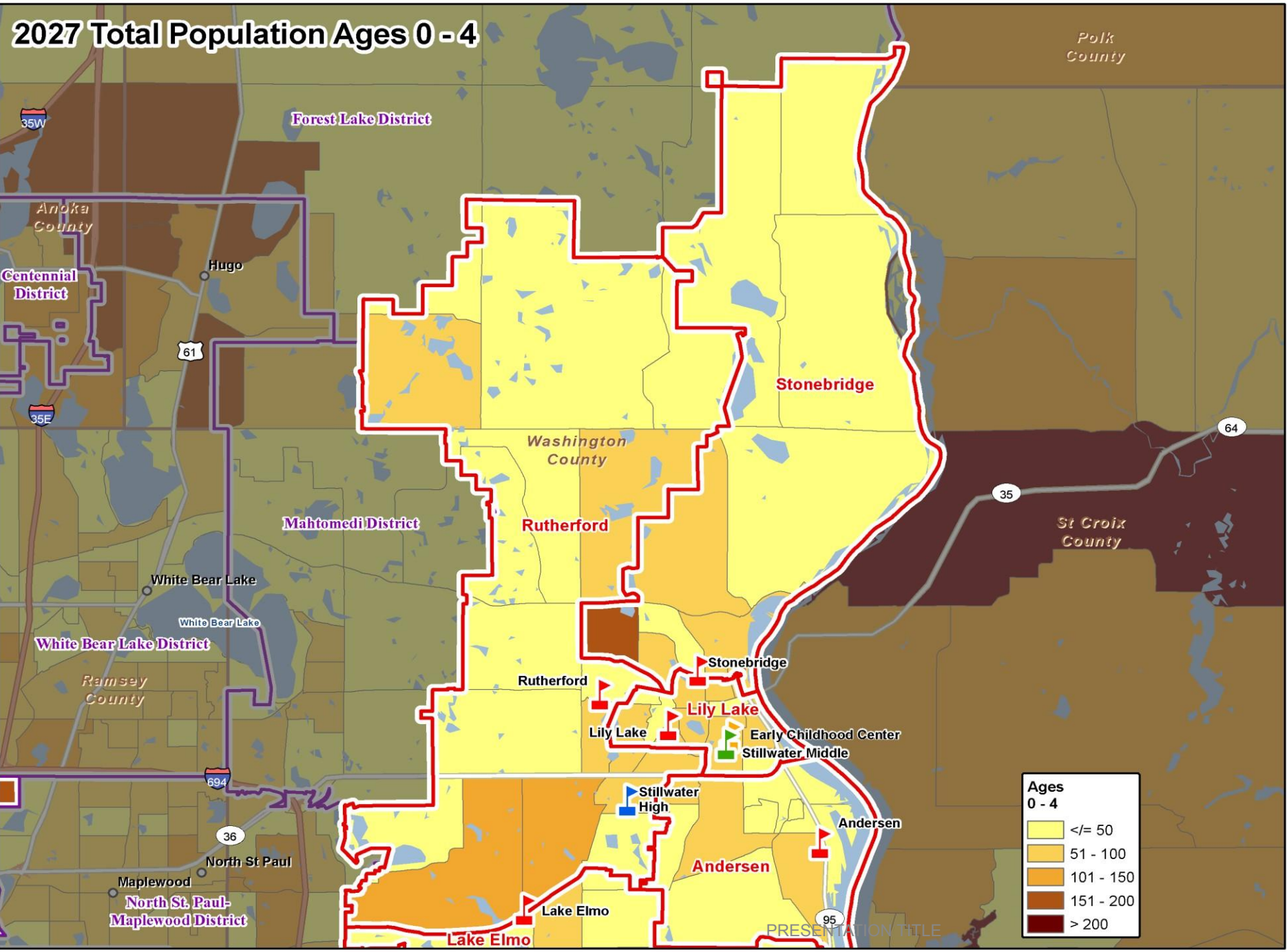
The community demographics continue to change in line with MN changes

TABLE: POPULATION & RACE DEMOGRAPHICS BY DISTRICT BOUNDARY							
Race	2010		2022		2027		2022-2027 % Change
	Number	%	Number	%	Number	%	
White	53,360	90.0%	57,112	83.2%	58,901	82.1%	3.1%
Black	1,627	2.7%	2,714	4.0%	3,001	4.2%	10.6%
Am. Indian	378	0.6%	386	0.6%	396	0.6%	2.6%
Asian	1,664	2.8%	2,731	4.0%	3,098	4.3%	13.4%
Hispanic	1,393	2.3%	2,563	3.7%	2,720	3.8%	6.1%
Other	881	1.5%	3,121	4.5%	3,602	5.0%	15.4%
Totals	59,303	100%	68,627	100%	71,718	100%	4.5%

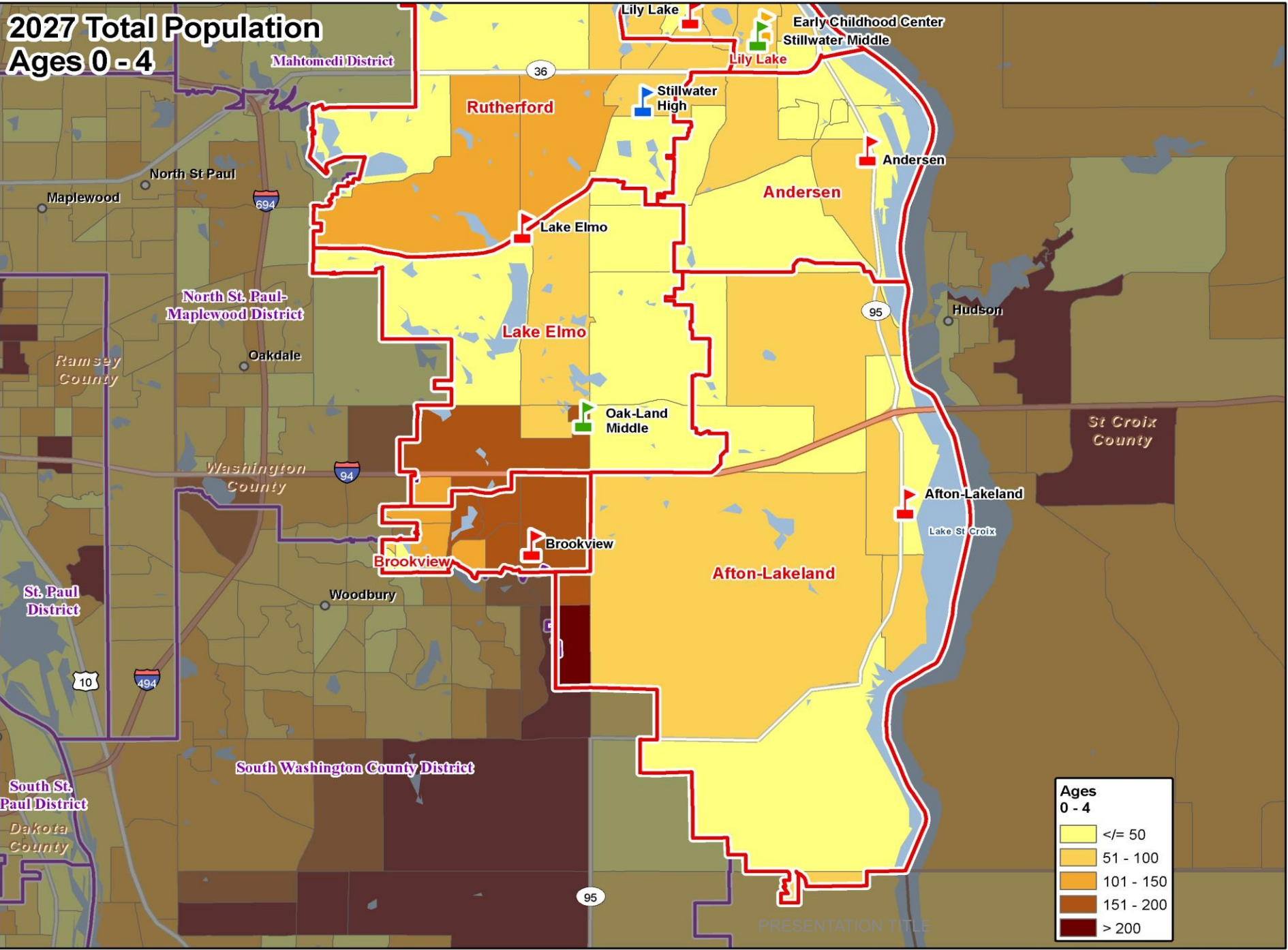
Future student- age populations are increasing

TABLE: POPULATION & AGE DEMOGRAPHICS BY DISTRICT BOUNDARY							
Age Range	2010		2022		2027		2022-2027 % Change
	Number	Percent	Number	Percent	Number	Percent	
0 - 4	3,133	5.3%	3,333	4.9%	3,519	4.9%	5.6%
5 - 9	4,199	7.1%	4,036	5.9%	4,119	5.7%	2.1%
10 - 14	4,676	7.9%	4,592	6.7%	4,548	6.3%	-1.0%
15 - 19	3,976	6.7%	4,503	6.6%	4,242	5.9%	-5.8%
20 - 24	2,773	4.7%	3,592	5.2%	3,346	4.7%	-6.8%
25 - 34	5,828	9.8%	7,413	10.8%	7,927	11.1%	6.9%
35 - 44	8,236	13.9%	8,242	12.0%	9,255	12.9%	12.3%
45 - 54	10,810	18.2%	9,763	14.2%	9,309	13.0%	-4.7%
55 - 64	8,325	14.0%	10,830	15.8%	10,356	14.4%	-4.4%
65 - 74	4,146	7.0%	7,637	11.1%	8,942	12.5%	17.1%
75 - 84	2,155	3.6%	3,365	4.9%	4,648	6.5%	38.1%
85+	1,046	1.8%	1,321	1.9%	1,507	2.1%	14.1%
Median Age	41.6		43.4		43.8		0.9%
Totals	59,303		68,627	100.0%	71,718	100.0%	4.5%
	100.0%						
	5-Year Age Increments						
	10-Year Age Increments						

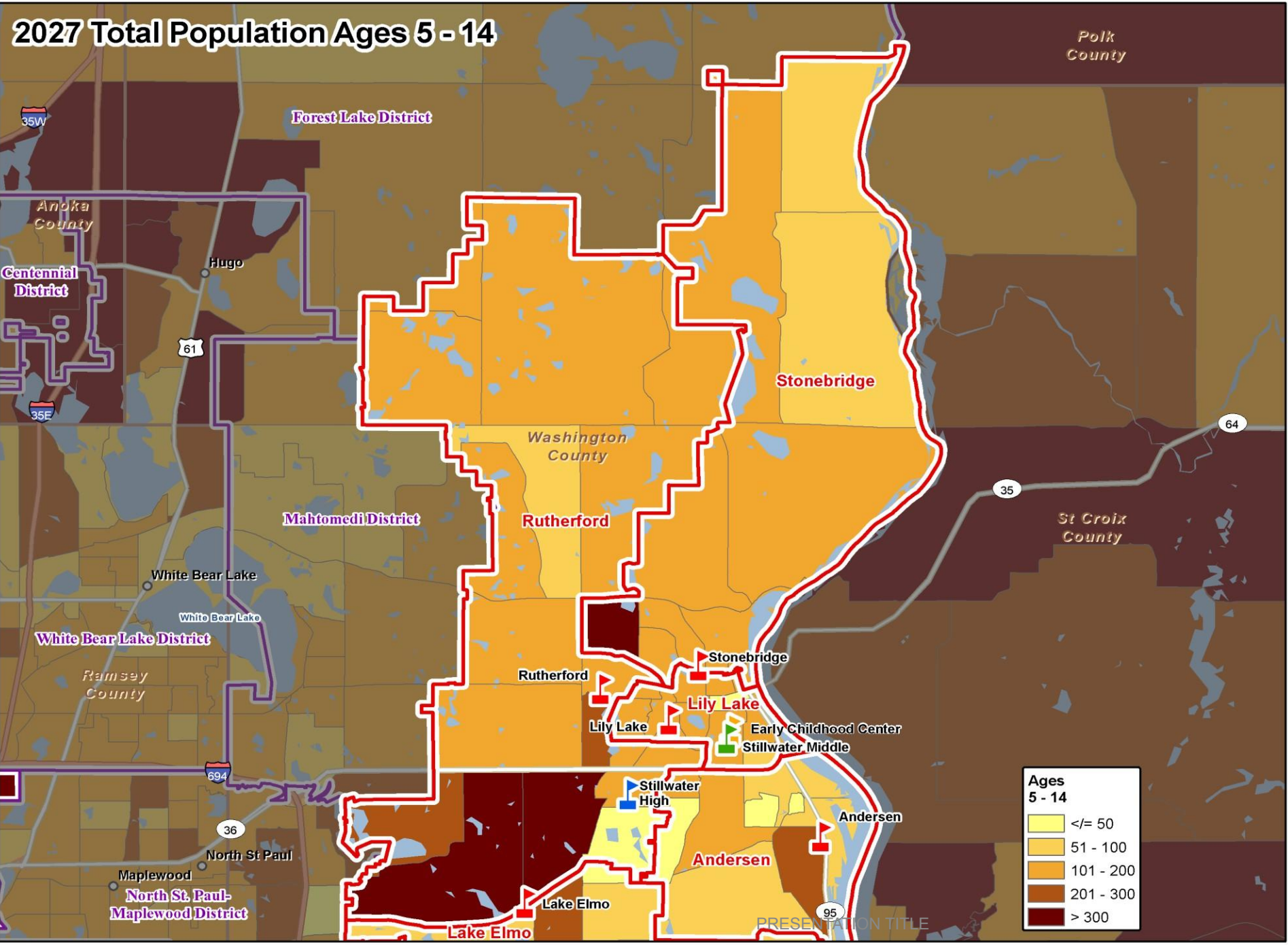
2027 Total Population Ages 0 - 4



2027 Total Population Ages 0 - 4



2027 Total Population Ages 5 - 14



2027 Total Population Ages 5 - 14

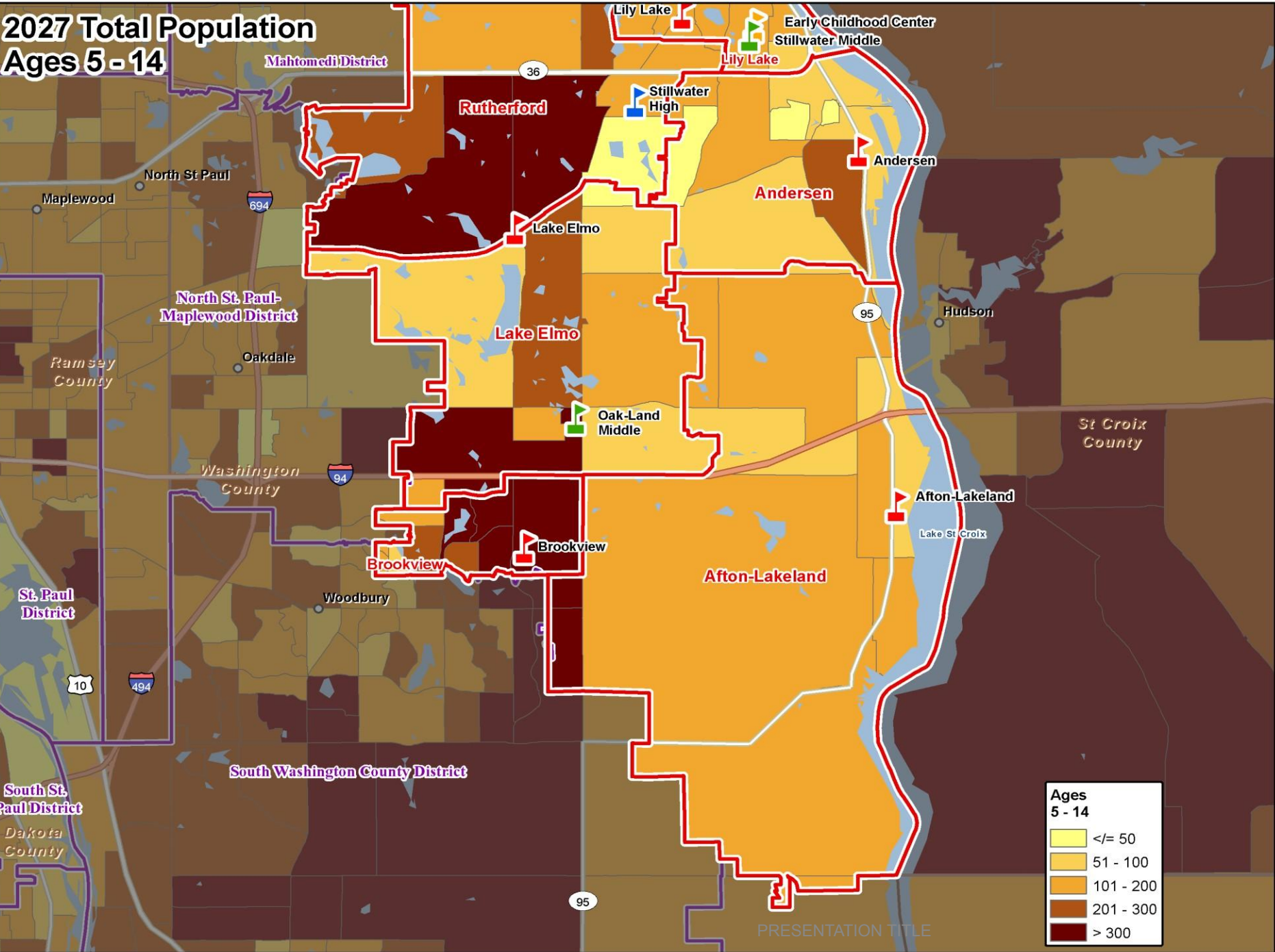


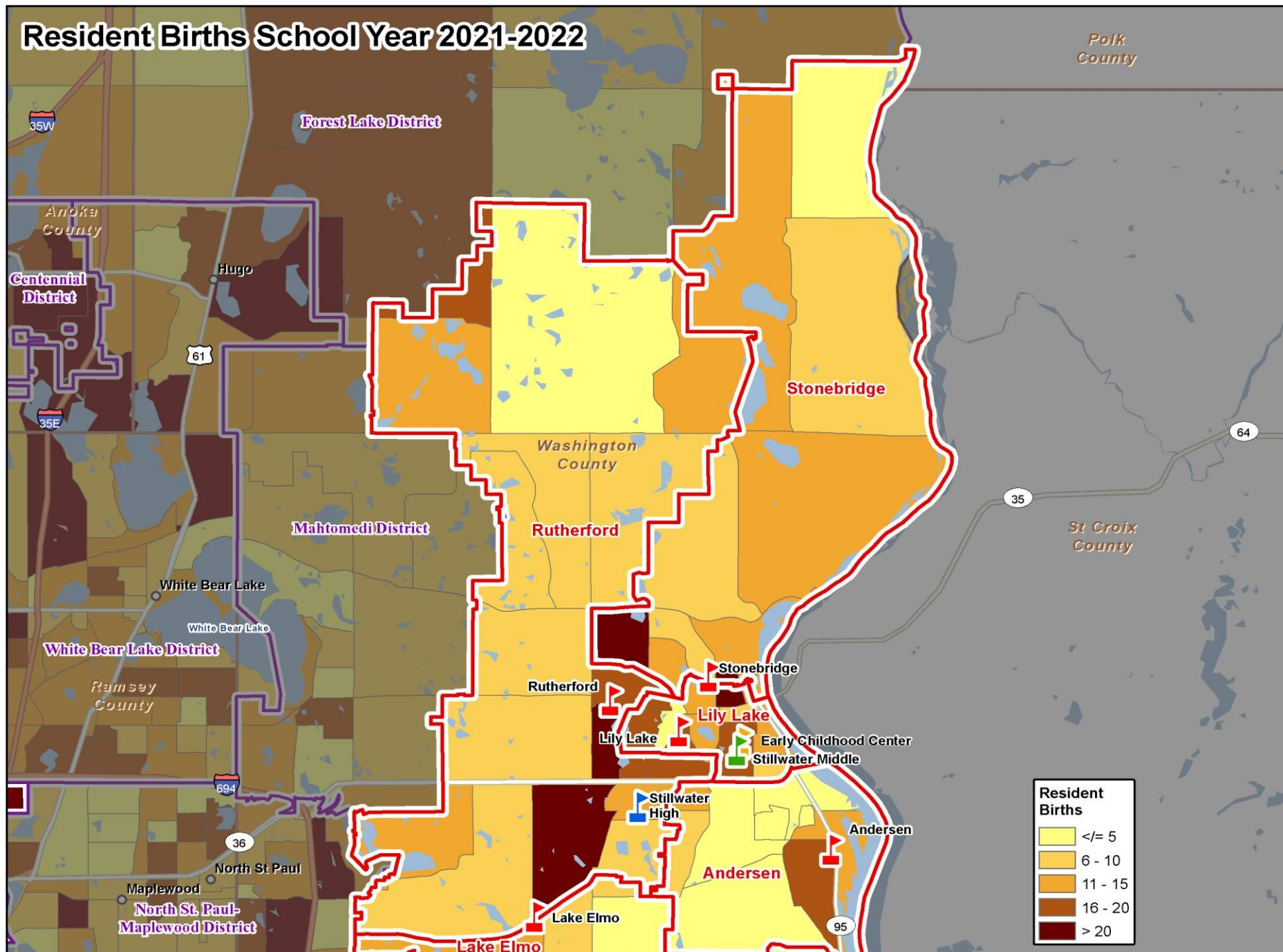
TABLE: HISTORICAL RESIDENT BIRTHS BY ELEMENTARY ATTENDANCE AREA													
Birth Year	2010-11	2011-12	2012-13	2013-14	2014-15	2015-16	2016-17	2017-18	2018-19	2019-20	2020-21	2021-22	2010 - 2022 % Change
Kindergarten Year	2016-17	2017-18	2018-19	2019-20	2020-21	2021-22	2022-23	2023-24	2024-25	2025-26	2026-27	2027-28	
Afton-Lakeland	46	78	43	66	73	73	83	74	80	64	81	86	86.5%
Andersen	48	59	54	70	56	53	65	71	45	59	65	59	23.7%
Brookview	73	85	34	88	103	75	83	68	73	78	68	84	15.5%
Lake Elmo	78	73	73	64	81	89	88	119	104	136	148	188	141.9%
Lily Lake	118	90	126	90	95	158	109	90	95	103	81	74	-37.2%
Rutherford	70	76	79	73	71	54	69	59	74	76	65	53	-25.0%
Stonebridge	78	81	43	94	91	78	74	84	73	86	88	84	8.1%
SAPS Totals	509	541	450	544	570	578	569	564	543	601	595	626	23.1%

Live birth trends differ across the district with most growth in Lake Elmo, south area of Stonebridge, and south of 94

TABLE: HISTORICAL RESIDENT BIRTHS - SURROUNDING SCHOOL DISTRICTS													
Birth Year	2010-11	2011-12	2012-13	2013-14	2014-15	2015-16	2016-17	2017-18	2018-19	2019-20	2020-21	2021-22	2010- 2022 % Change
Kindergarten Year	2016-17	2017-18	2018-19	2019-20	2020-21	2021-22	2022-23	2023-24	2024-25	2025-26	2026-27	2027-28	
Forest Lake	509	436	441	404	414	425	364	433	458	466	421	468	-8.1%
Mahtomedi	80	101	99	99	83	114	106	106	103	110	106	126	57.8%
North St. Paul-Maplewood	936	895	893	880	925	856	848	853	788	810	864	873	-6.8%
South Washington County	1,344	1,249	1,394	1,261	1,296	1,281	1,254	1,164	1,189	1,153	1,215	1,250	-7.0%
White Bear Lake	706	760	705	746	739	670	705	673	655	663	653	660	-6.5%
Surrounding District Totals	3,575	3,441	3,531	3,390	3,456	3,346	3,276	3,228	3,191	3,201	3,259	3,376	-5.6%

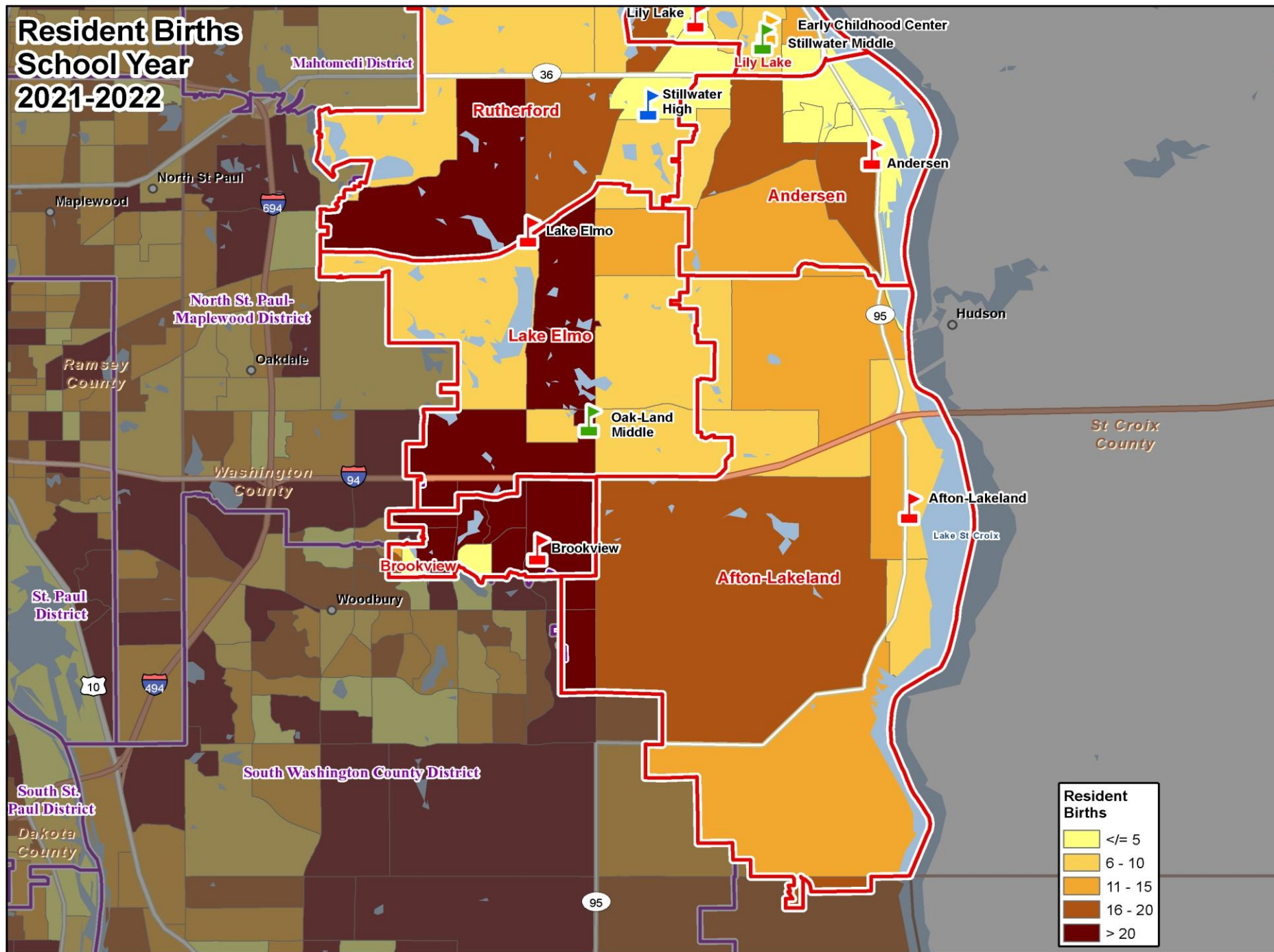
Near MN school districts are mostly seeing slight decline in live births

Resident Births School Year 2021-2022



Northern area of district continues a decade-long trend of lower resident births

Resident Births School Year 2021-2022



Southern area of district continues a decade-long trend of higher resident births

DISTRICT DEMOGRAPHICS

Stillwater Area Public Schools Historical Student Enrollment

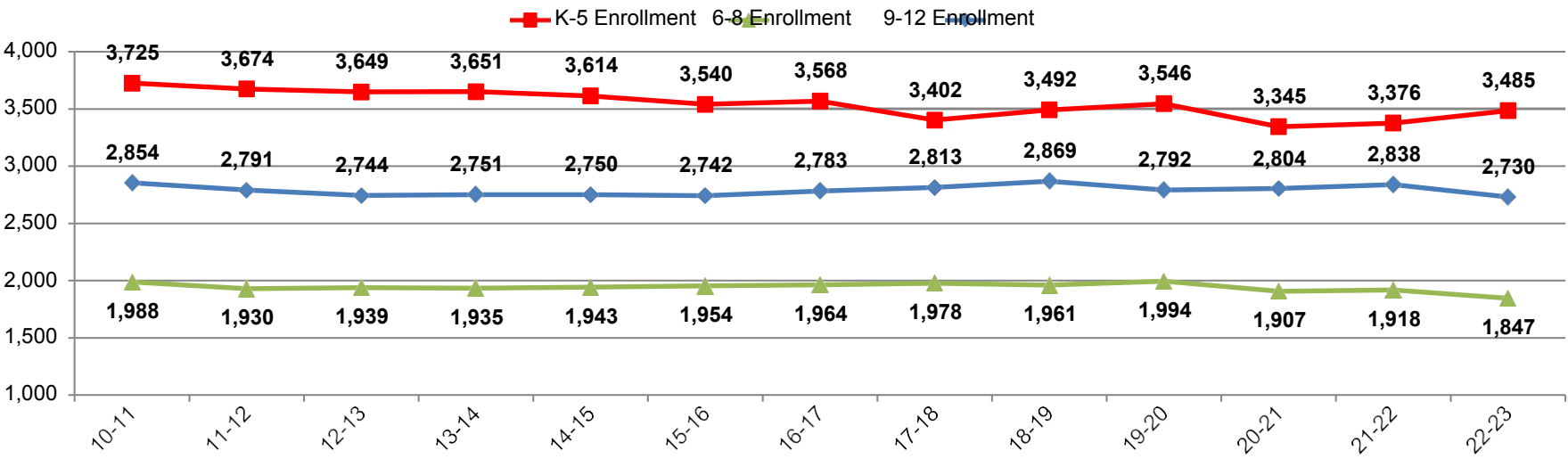
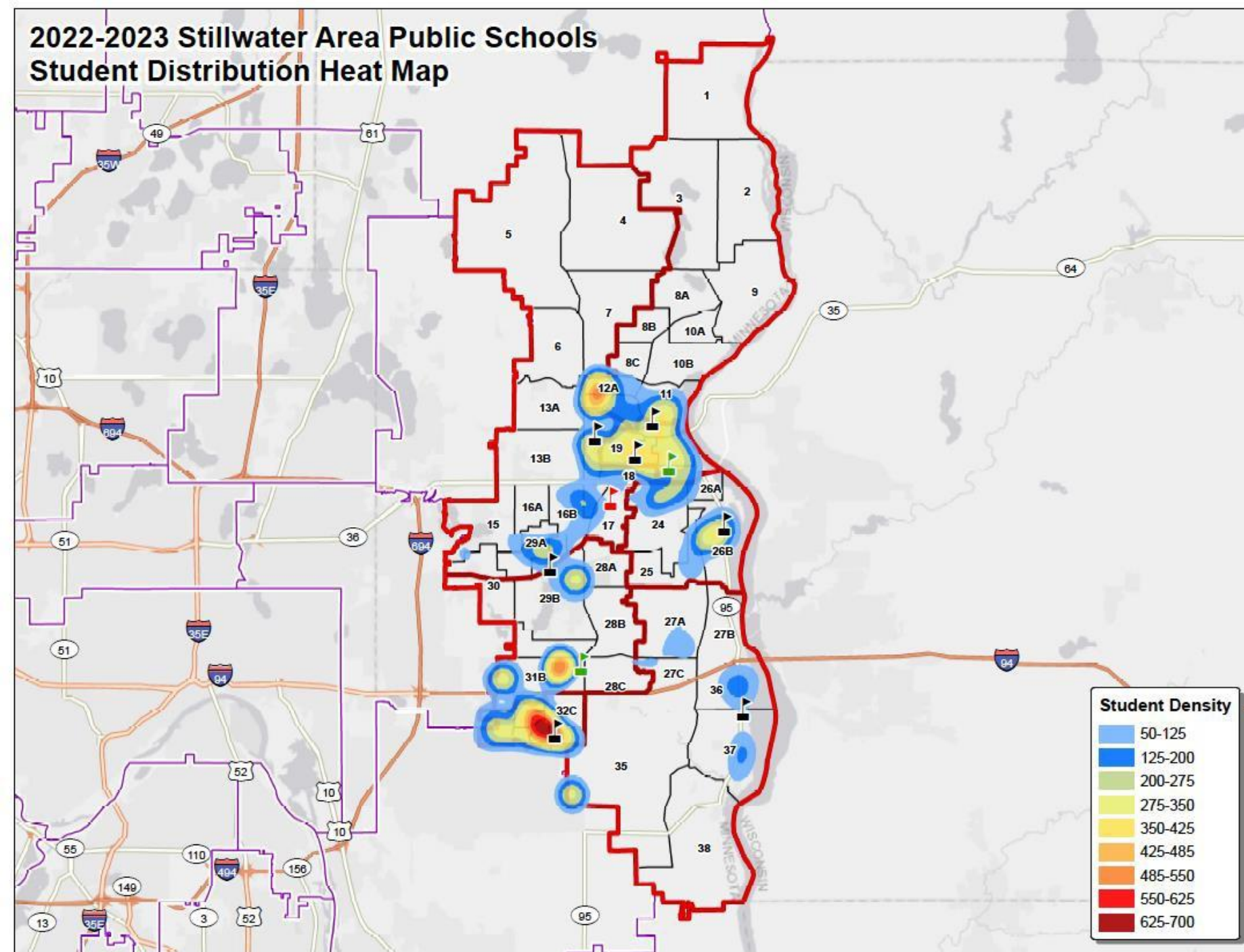


TABLE: STILLWATER AREA PUBLIC SCHOOLS HISTORICAL ENROLLMENT

Grade	10-11	11-12	12-13	13-14	14-15	15-16	16-17	17-18	18-19	19-20	20-21	21-22	22-23
K	618	594	552	548	599	550	551	539	585	569	507	555	583
1	604	599	609	561	544	599	572	551	550	596	570	559	559
2	631	623	618	621	576	569	631	546	578	573	585	569	594
3	607	626	620	615	618	573	589	610	557	588	549	550	581
4	624	612	637	643	633	618	583	579	617	575	578	581	579
5	641	620	613	663	644	631	642	577	605	645	556	562	589
6	662	641	627	640	653	652	634	654	612	638	622	596	599
7	622	662	647	646	640	654	656	651	688	649	640	672	592
8	704	627	665	649	650	648	674	673	661	707	645	650	656
9	698	721	657	675	682	685	677	710	711	664	710	695	666
10	663	687	703	671	672	701	706	686	722	713	658	713	670
11	728	659	709	707	669	683	706	708	682	711	707	672	711
12	765	724	675	698	727	673	694	709	754	704	729	758	683
Total K - 5	3,725	3,674	3,649	3,651	3,614	3,540	3,568	3,402	3,492	3,546	3,345	3,376	3,485
Total 6 - 8	1,988	1,930	1,939	1,935	1,943	1,954	1,964	1,978	1,961	1,994	1,907	1,918	1,847
Total 9 - 12	2,854	2,791	2,744	2,751	2,750	2,742	2,783	2,813	2,869	2,792	2,804	2,838	2,730
Total K - 12	8,567	8,395	8,332	8,337	8,307	8,236	8,315	8,193	8,322	8,332	8,056	8,132	8,062

2022-2023 Stillwater Area Public Schools Student Distribution Heat Map

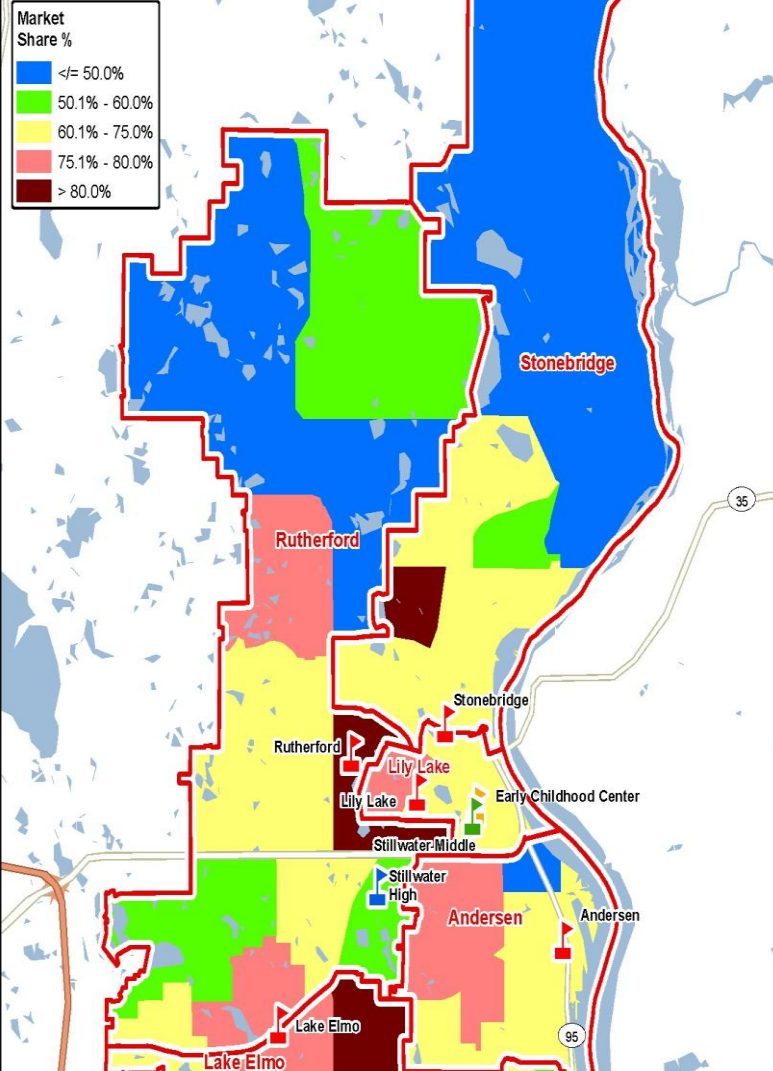


Current student populations continue to concentrate in areas, and trending south of 94 and in Lake Elmo area

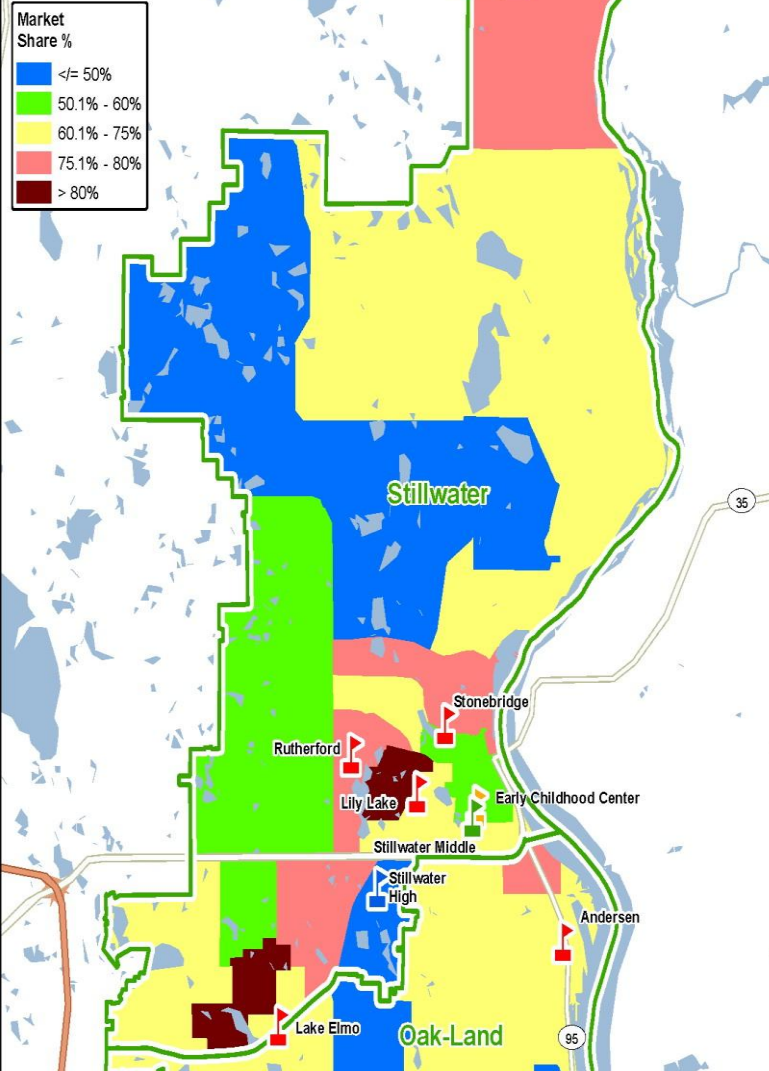
POTENTIAL GROWTH FACTORS

Market share, future housing development and housing turnover

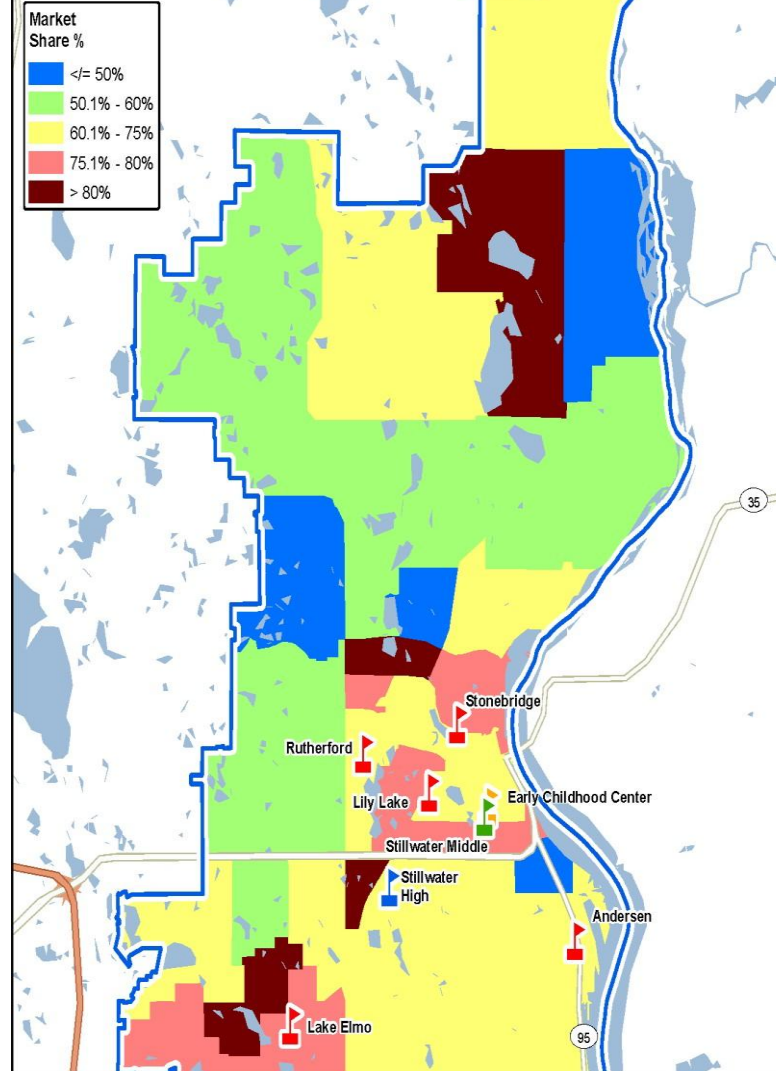
Fall 2022 Elementary (K-5) Market Share %



Fall 2022 Middle (6-8) Market Share %



Fall 2022 High (9-12) Market Share %



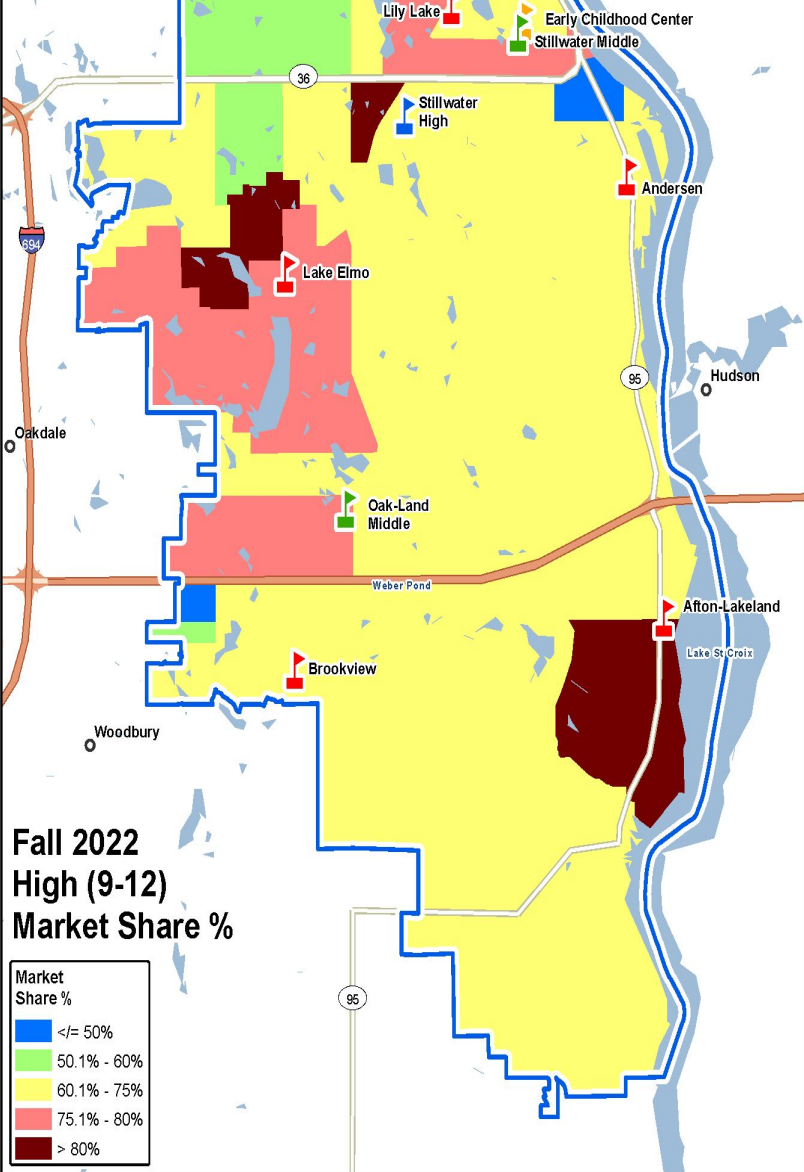
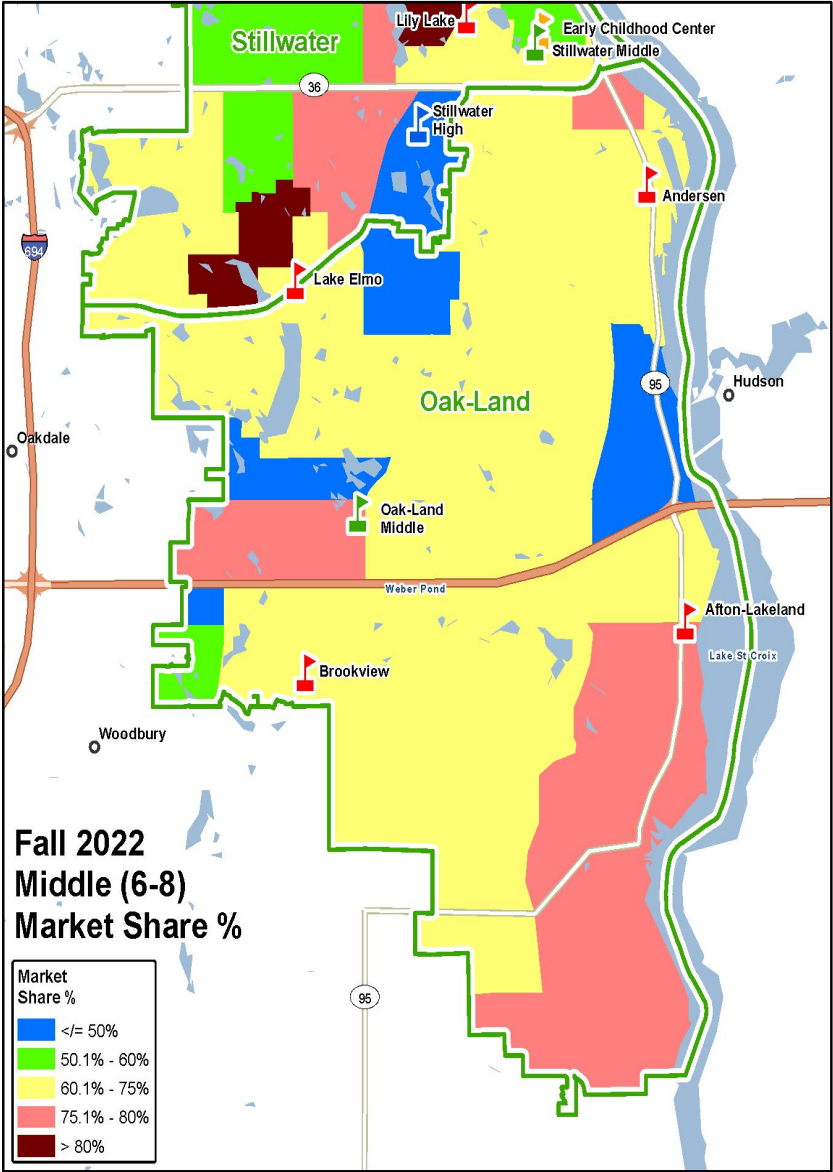
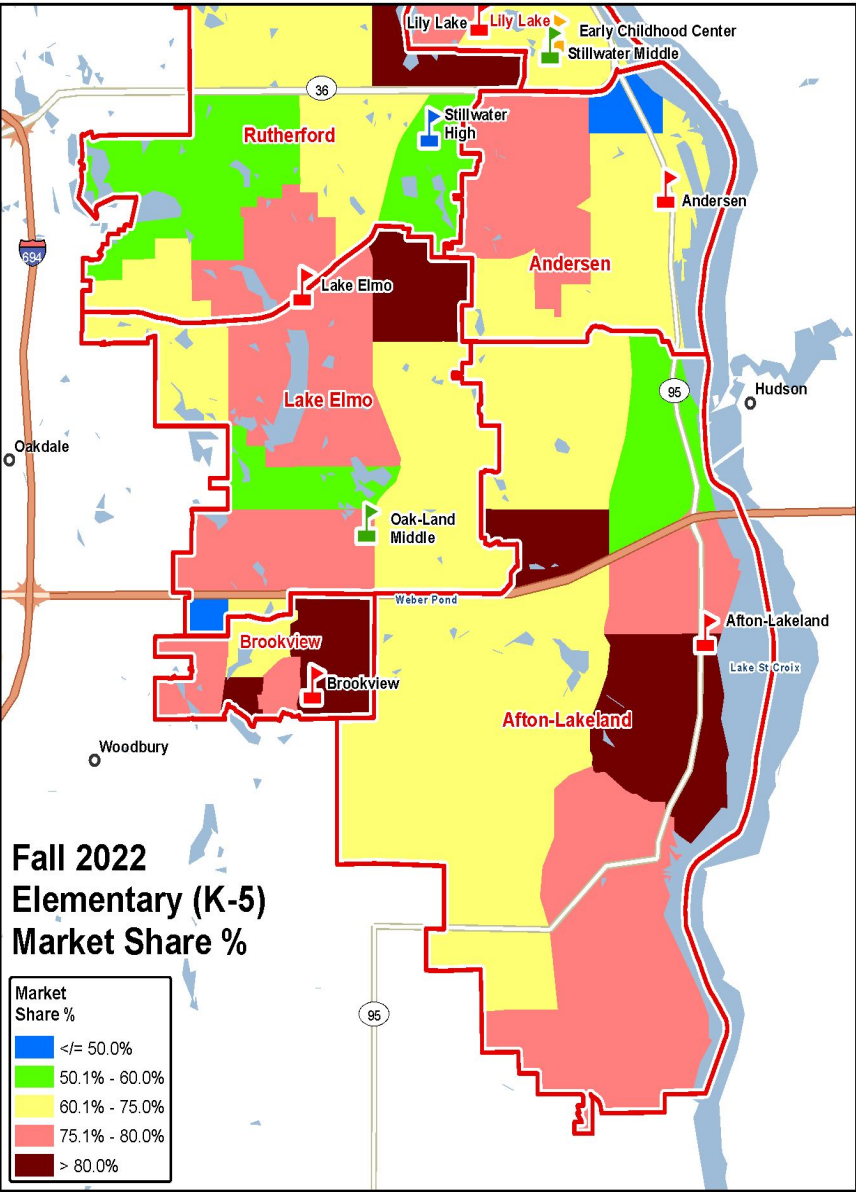


TABLE: RESIDENT STUDENT K-12 MARKET SHARE BY ATTENDANCE AREA

Attendance Area	Resident Students	Market Share %
Afton-Lakeland Elem	489	71.6%
Andersen Elementary	368	68.7%
Brookview Elementary	626	77.5%
Lake Elmo Elementary	489	74.9%
Lily Lake Elementary	414	67.6%
Rutherford Elementary	594	69.3%
Stonebridge Elementary	429	63.5%
Oak-Land Middle	939	68.0%
Stillwater Middle	852	68.3%
Stillwater High	2,609	71.0%

Market share is the % of school-age children attending any one of the district schools

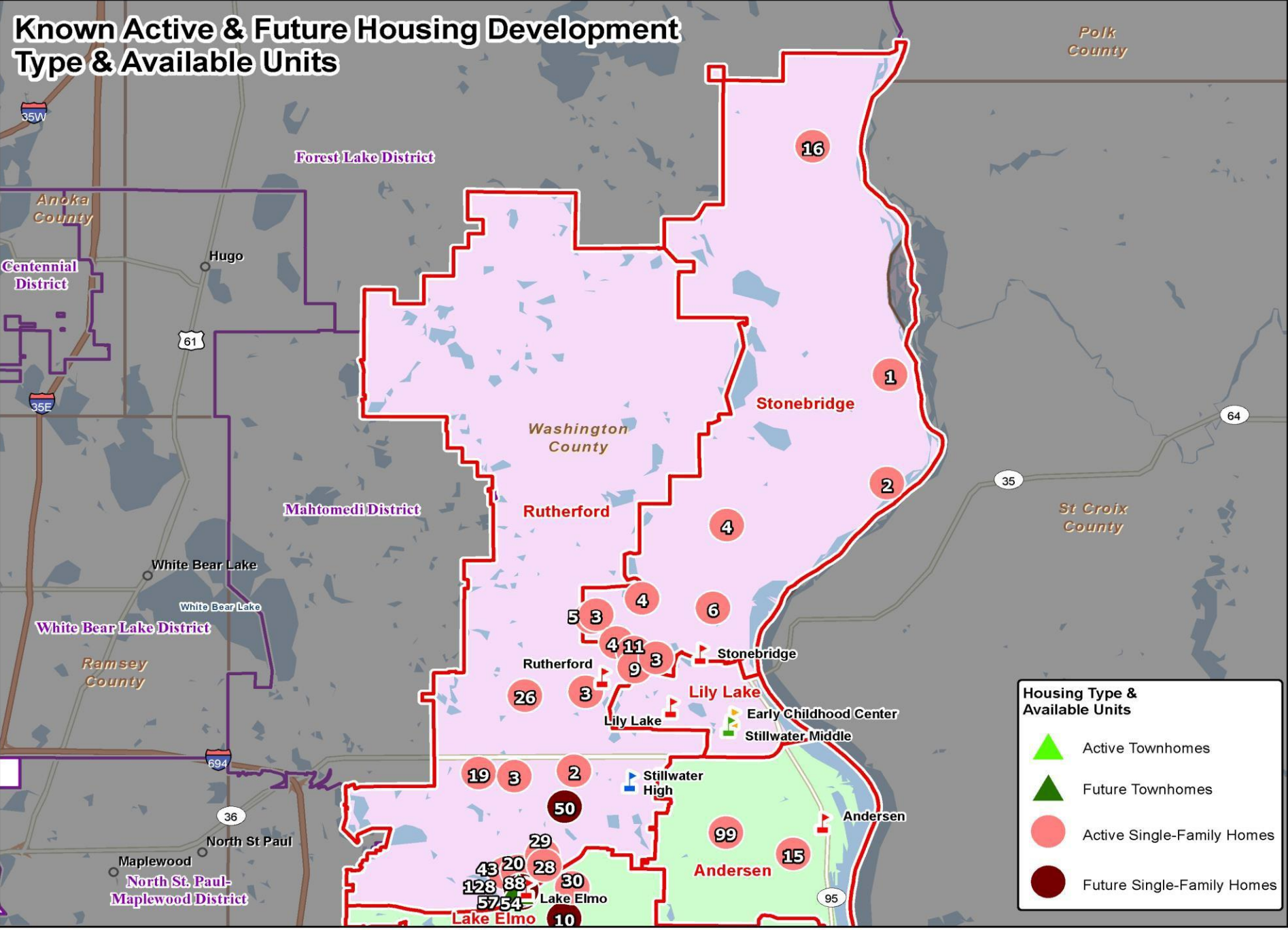
EXAMPLE:
Approx. 75% of students in Lake Elmo Elementary School attend one of the district schools, and 25% of students chose another option.

Totals Elementary	7,80	70.2%
Totals Middle	9	70.7%
Totals High	3,40	68.1%
Totals	9	71.0%
	1,79	
	1	

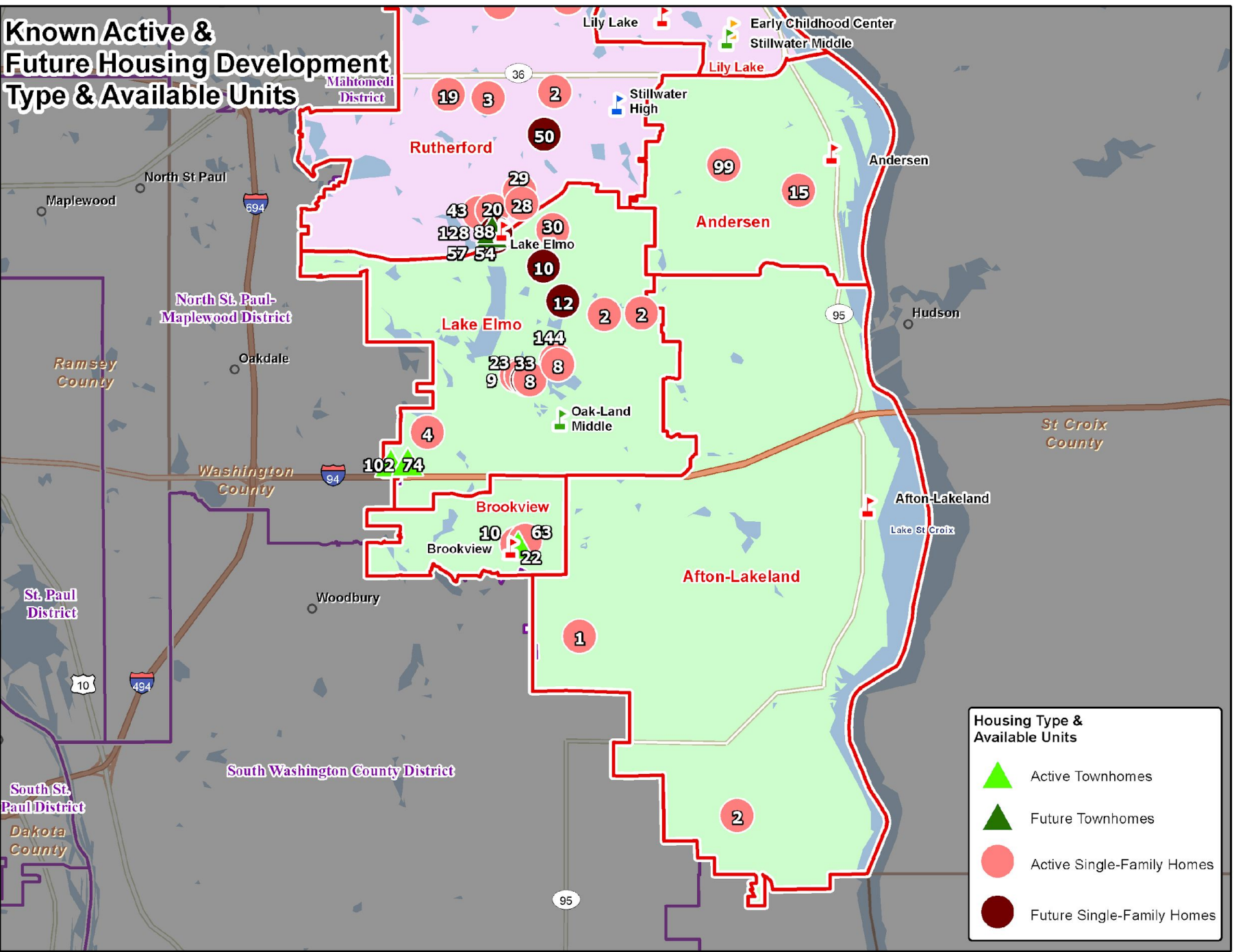
TABLE: MODELED K-12 MARKET SHARE BY ATTENDANCE AREA

Attendance Area	Modeled Resident Students	Modeled Market Share %	Change from Current	
			Additional Students	Change in Market Share %
Afton-Lakeland Elem	527	77.2%	38	5.6%
Andersen Elementary	403	75.2%	35	6.5%
Brookview Elementary	646	80.0%	20	2.5%
Lake Elmo Elementary	508	77.8%	19	2.9%
Lily Lake Elementary	463	75.7%	49	8.0%
Rutherford Elementary	661	77.1%	67	7.8%
Stonebridge Elementary	508	75.1%	79	11.7%
Oak-Land Middle	1,046	75.7%	107	7.7%
Stillwater Middle	956	76.6%	104	8.3%
Stillwater High	2,812	76.5%	203	5.5%
Totals	8,530	76.6%	721	6.5%
Elementary Totals	3,716	77.0%	307	6.4%
Middle Totals	2,002	76.2%	211	8.0%
High Totals	2,812	76.5%	203	5.5%

Known Active & Future Housing Development Type & Available Units



**Known Active & Future Housing Development
Type & Available Units**



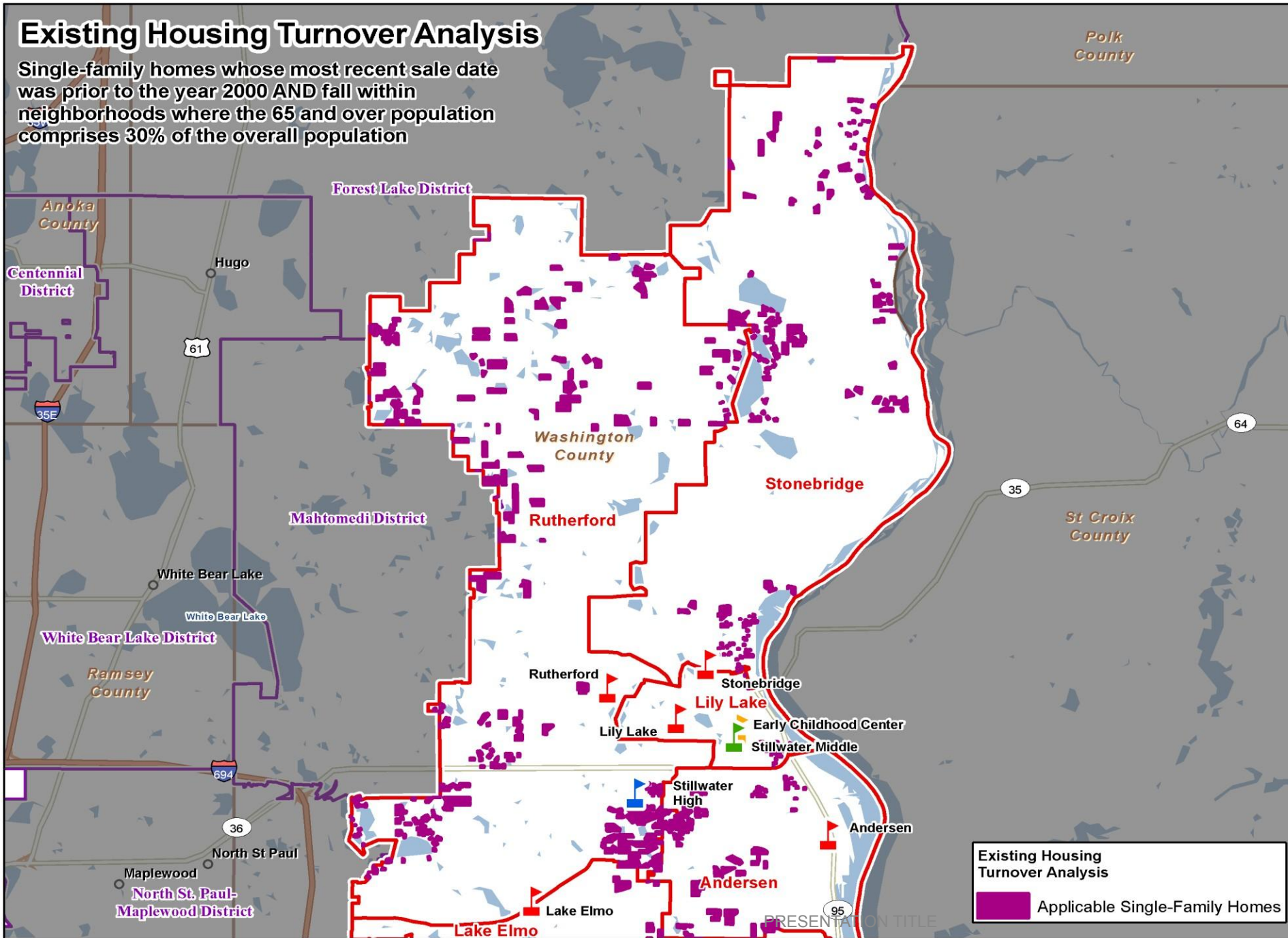
**Approx. 750
single-family homes
and townhomes
planned / in
development**

**Nearly 400
single-family homes
and townhomes
planned / future
development**

**Above estimated to
yield approx. 350 K –
12 students**

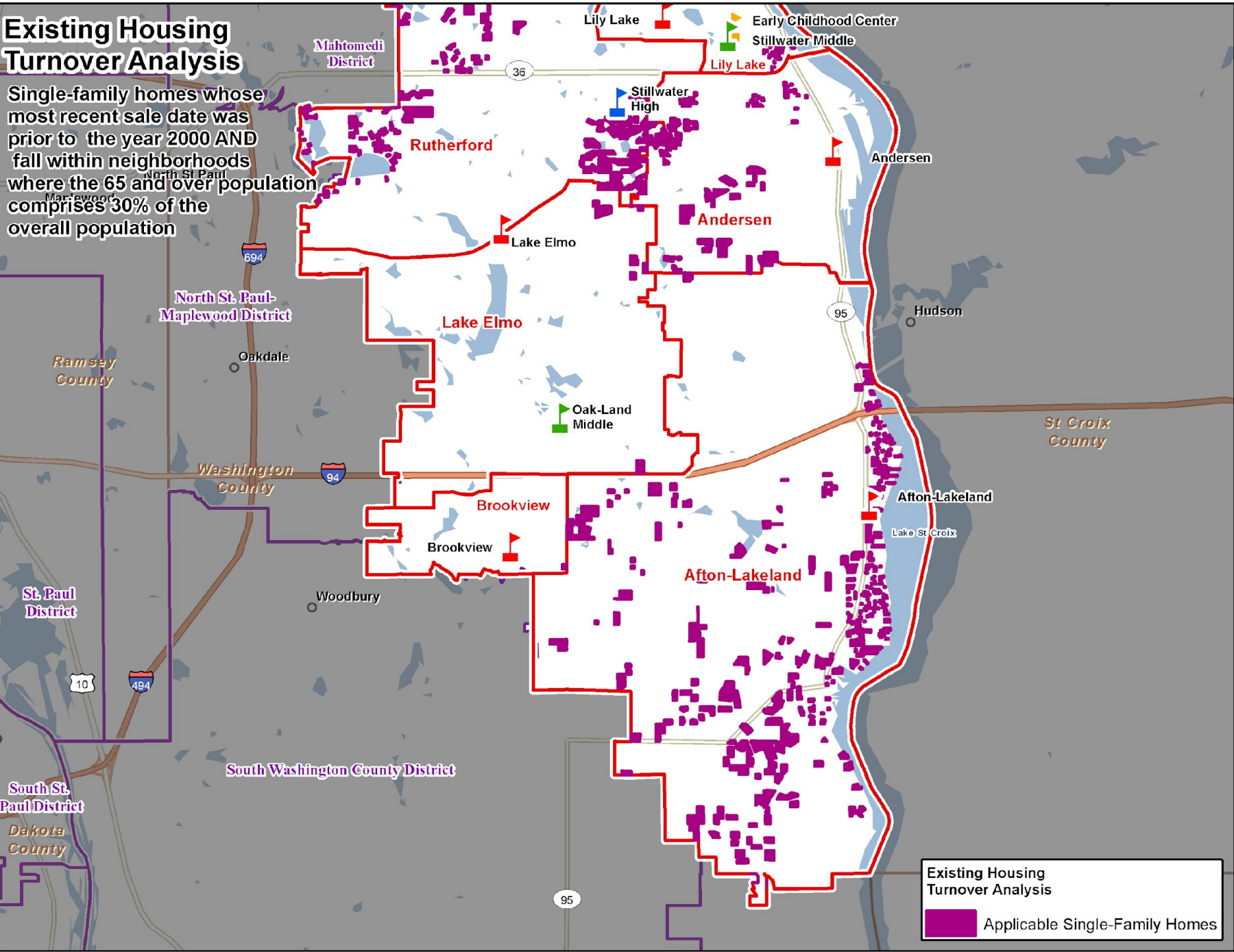
Existing Housing Turnover Analysis

Single-family homes whose most recent sale date was prior to the year 2000 AND fall within neighborhoods where the 65 and over population comprises 30% of the overall population



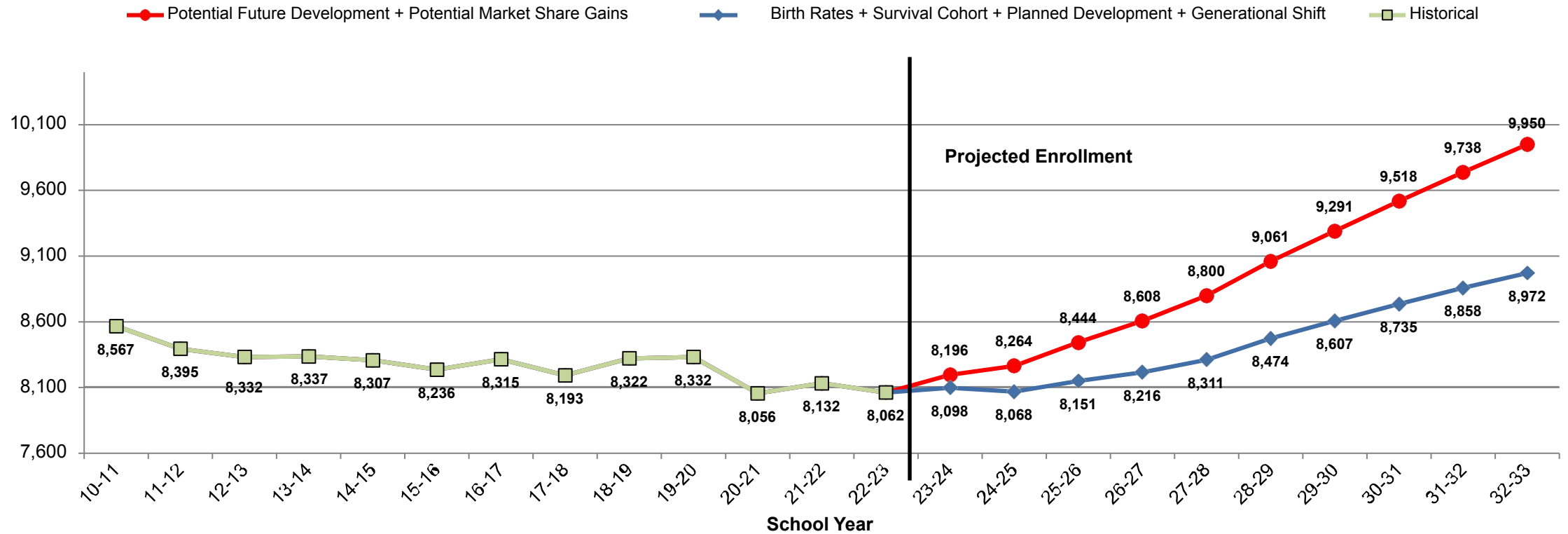
Existing Housing Turnover Analysis

Single-family homes whose most recent sale date was prior to the year 2000 AND fall within neighborhoods where the 65 and over population comprises 30% of the overall population



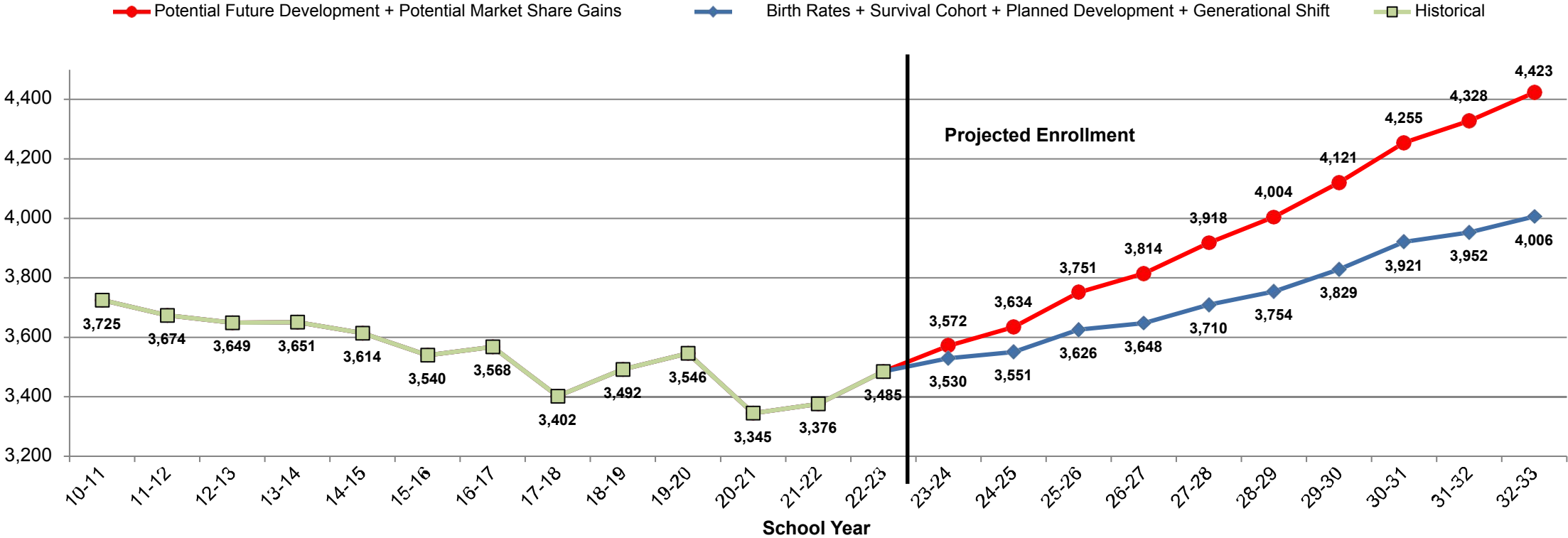
Enrollment Projections

Chart 1: Total Student Enrollment (K-12)



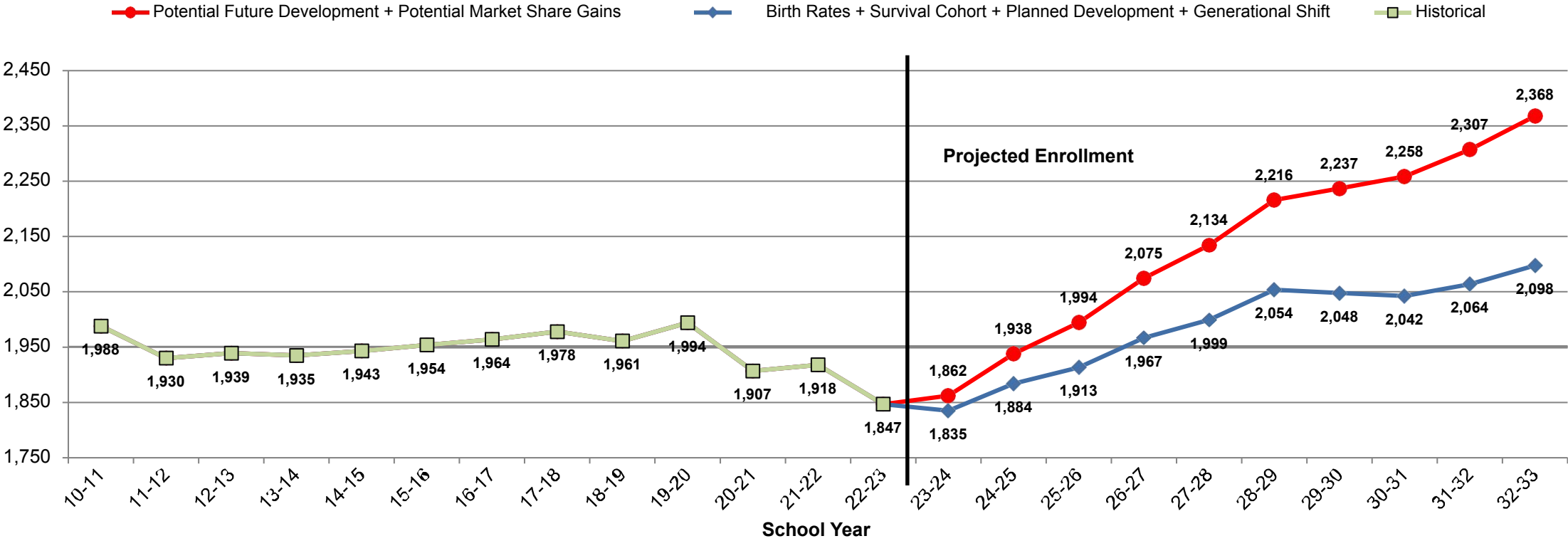
Enrollment Scenarios	% Facility Utilization 2022-2023	% Facility Utilization 2026-2027	% Facility Utilization 2031-2032
Current	87.6%	Not Applicable	Not Applicable
Birth Rates + Survival Cohort + Planned Development + Generational Shift	Not Applicable	90.3%	97.5%
Above Scenarios + Future Development + Potential Market Share	Not Applicable	95.6%	108.1%
Current K-12 Capacity	9,206		

Chart 2: Total Elementary Student Enrollment (K-5)



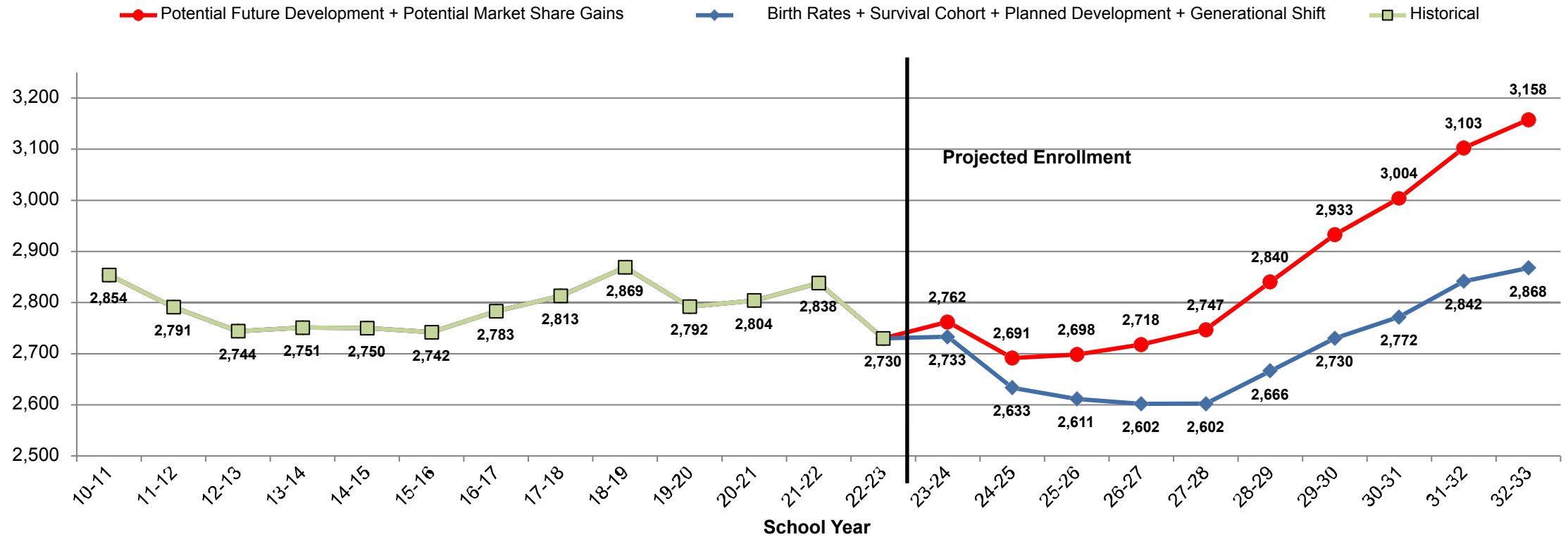
Enrollment Scenarios	% Facility Utilization 2022-2023	% Facility Utilization 2026-2027	% Facility Utilization 2031-2032
Current	87.7%	Not Applicable	Not Applicable
Birth Rates + Survival Cohort + Planned Development + Generational Shift	Not Applicable	93.3%	100.8%
Above Scenarios + Future Development + Potential Market Share	Not Applicable	98.6%	111.3%
Current K-5 Capacity	3,975		

Chart 3: Middle Student Enrollment (6-8)



Enrollment Scenarios	% Facility Utilization 2022-2023	% Facility Utilization 2026-2027	% Facility Utilization 2031-2032
Current	81.3%	Not Applicable	Not Applicable
Birth Rates + Survival Cohort + Planned Development + Generational Shift	Not Applicable	88.0%	92.3%
Above Scenarios + Future Development + Potential Market Share	Not Applicable	93.9%	104.2%
Current Grades 6-8 Capacity	2,273		

Chart 4: Total High Student Enrollment (9-12)



Enrollment Scenarios	% Facility Utilization 2022-2023	% Facility Utilization 2026-2027	% Facility Utilization 2031-2032
Current	92.3%	Not Applicable	Not Applicable
Birth Rates + Survival Cohort + Planned Development + Generational Shift	Not Applicable	88.0%	96.9%
Above Scenarios + Future Development + Potential Market Share	Not Applicable	92.9%	106.7%
Current Grades 9-12 Capacity	2,958		

Enrollment: Areas of Concern

ENROLLMENT: AREAS OF CONCERN

Projected = Birth rate + Survival Cohort + Planned Development +
Generational Shift

Potential = Potential Future Development + Potential Market Share Gain

		Afton-Lakeland	Andersen	Lake Elmo	Oak-Land
PROJECTED 2031-2032	Enrollment	578	434	881	1,252
	% Facility Utilization	115.6%	115.8%	130.5%	114.4%
POTENTIAL 2031-2032	Enrollment	644	469	914	1,381
	% Facility Utilization	128.8%	125.1%	135.4%	126.1%

KEY MESSAGES

1. Facilities Development:

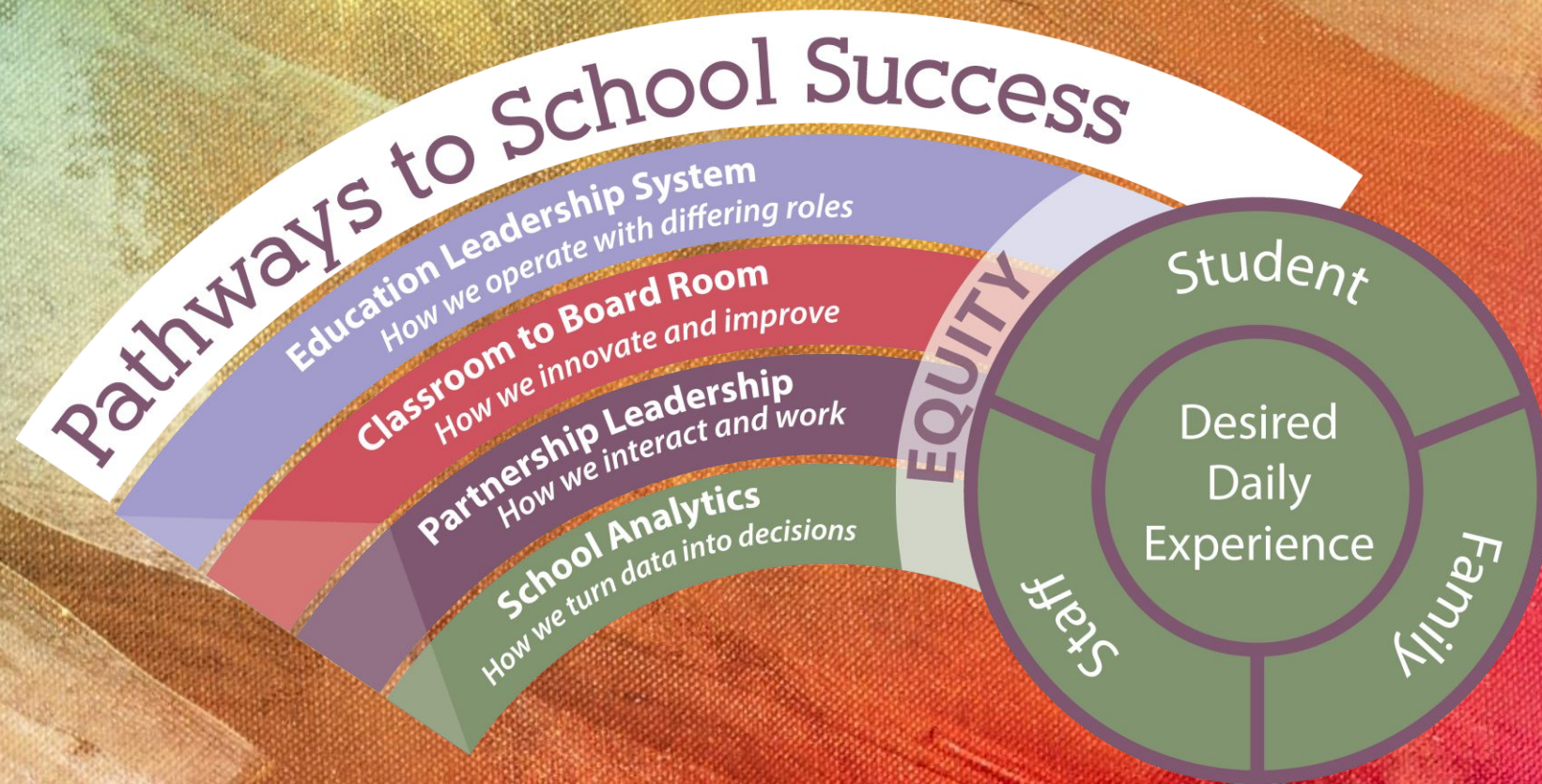
District needs to add capacity at the elementary and middle school levels as well as address known issues in aging facilities

2. Demographics:

The District is projected to grow in school-age population;
inclusive of live birth, current market share, and planned development

3. Strategic Influence: The District can influence and monitor growth opportunities in:

- a. Student market share growth
- b. Future, not yet planned housing development
- c. Known areas of possible generational shifts in housing across next 10 years

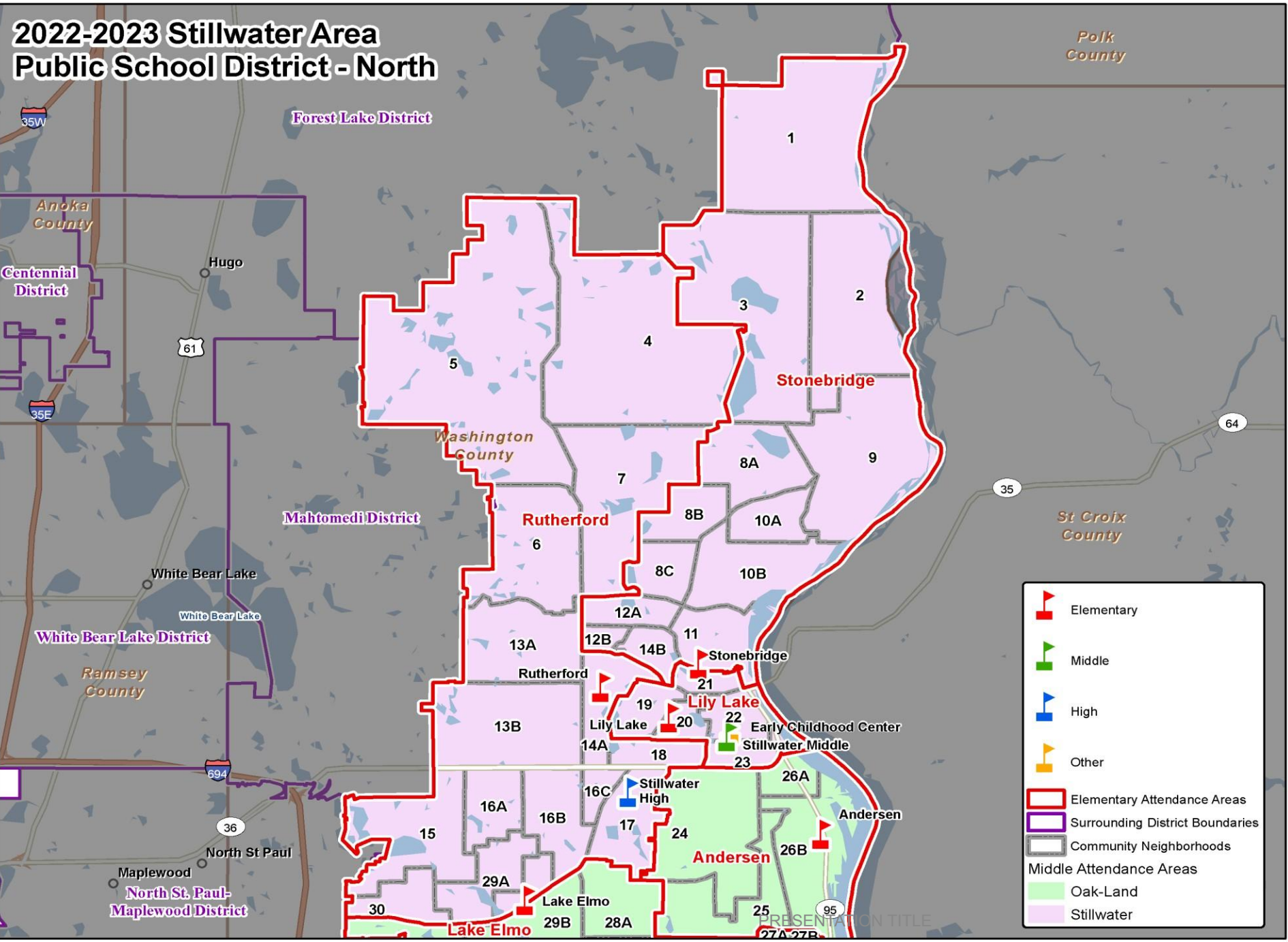


Dennis Cheesebrow
dennisc@teamworksintl.net
www.teamworksintl.net

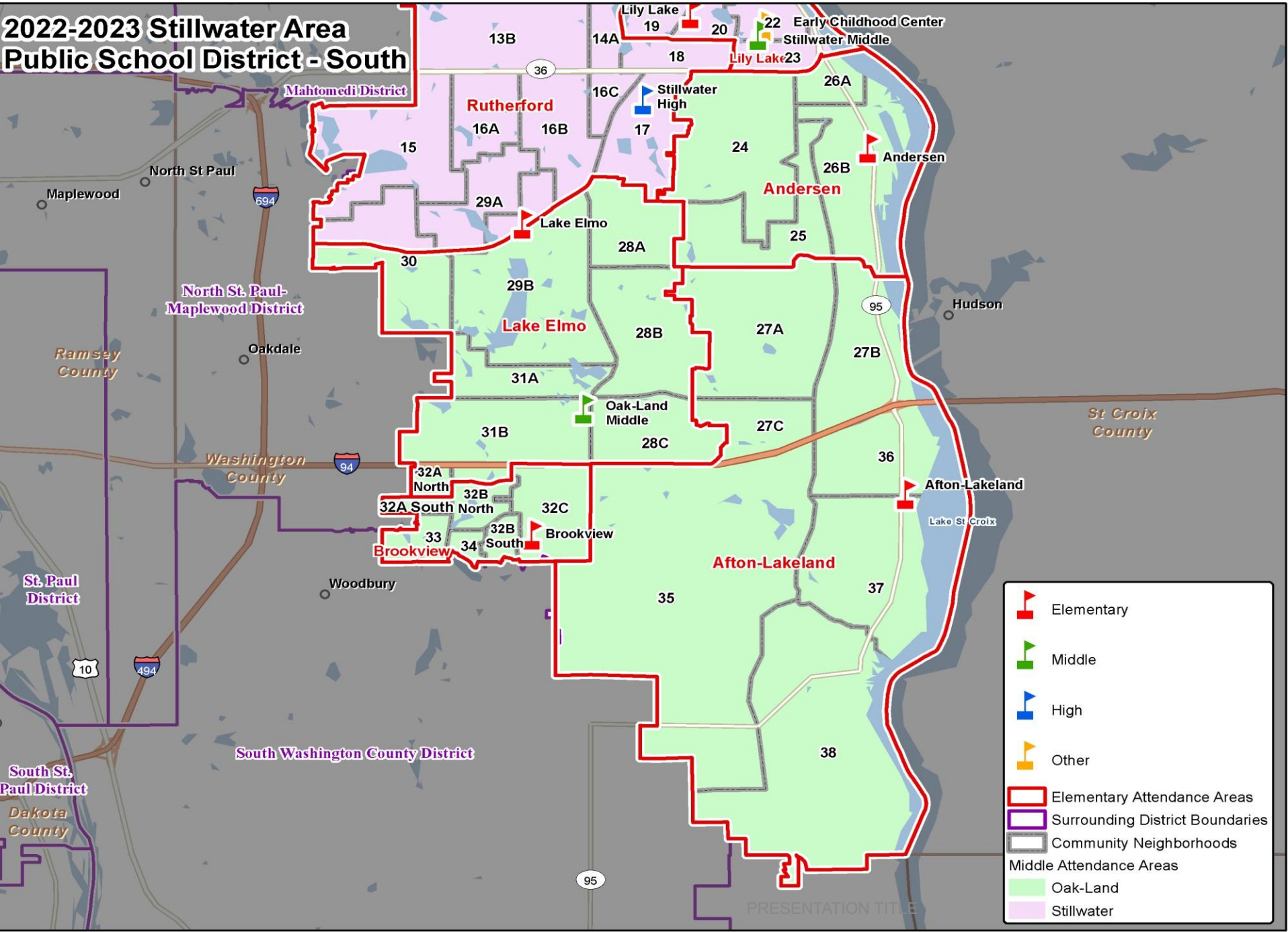


TeamWorks
International
Trusted. Proven. Unique.

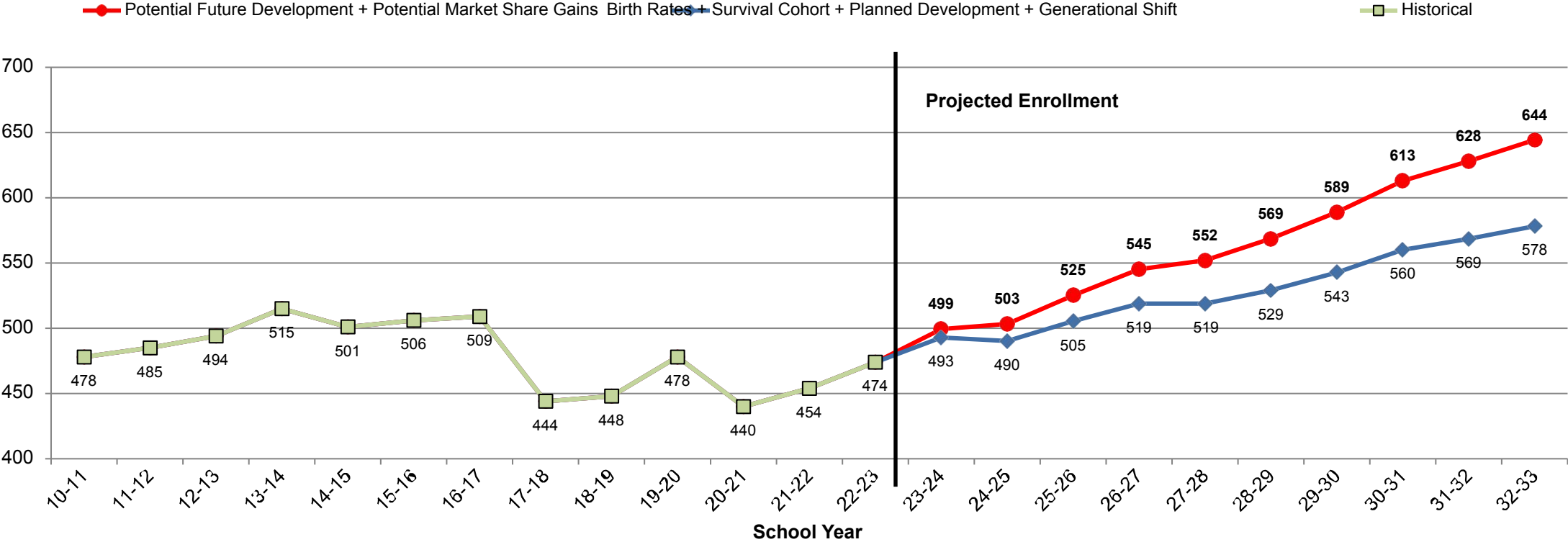
2022-2023 Stillwater Area Public School District - North



2022-2023 Stillwater Area
Public School District - South

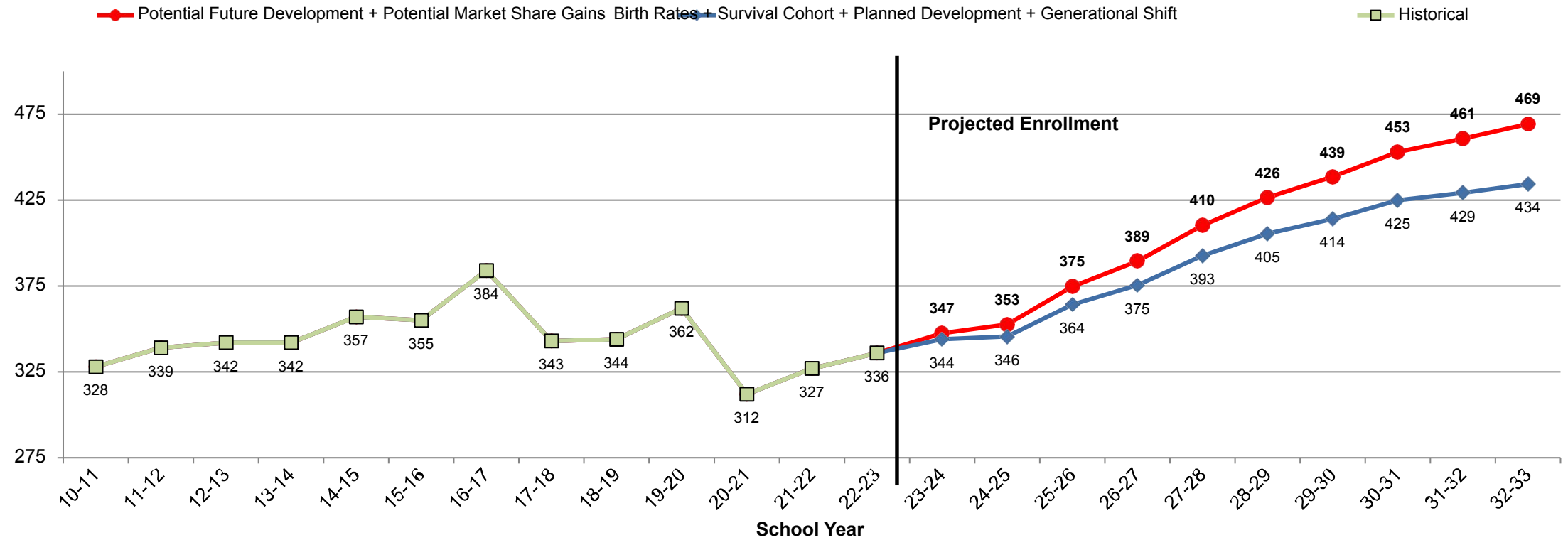


Afton-Lakeland Elementary Student Enrollment (K-5)



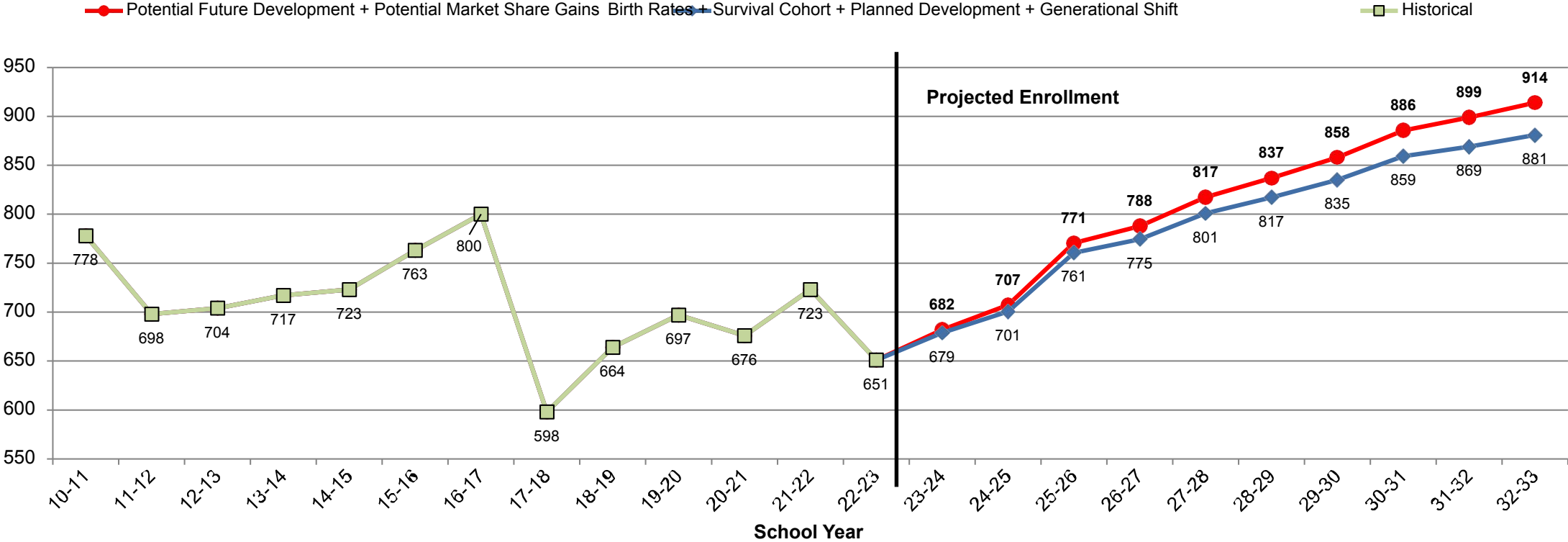
Enrollment Scenarios	Facility Utilization (%) 2022-2023	Facility Utilization (%) 2026-2027	Facility Utilization (%) 2031-2032
Current	94.8%	Not Aplicable	Not Aplicable
Birth Rates + Survival Cohort + Planned Development + Generational Shift	Not Aplicable	103.8%	115.6%
Above Scenarios + Potential Future Development + Potential Market Share	Not Aplicable	110.4%	128.8%

Andersen Elementary Student Enrollment (K-5)



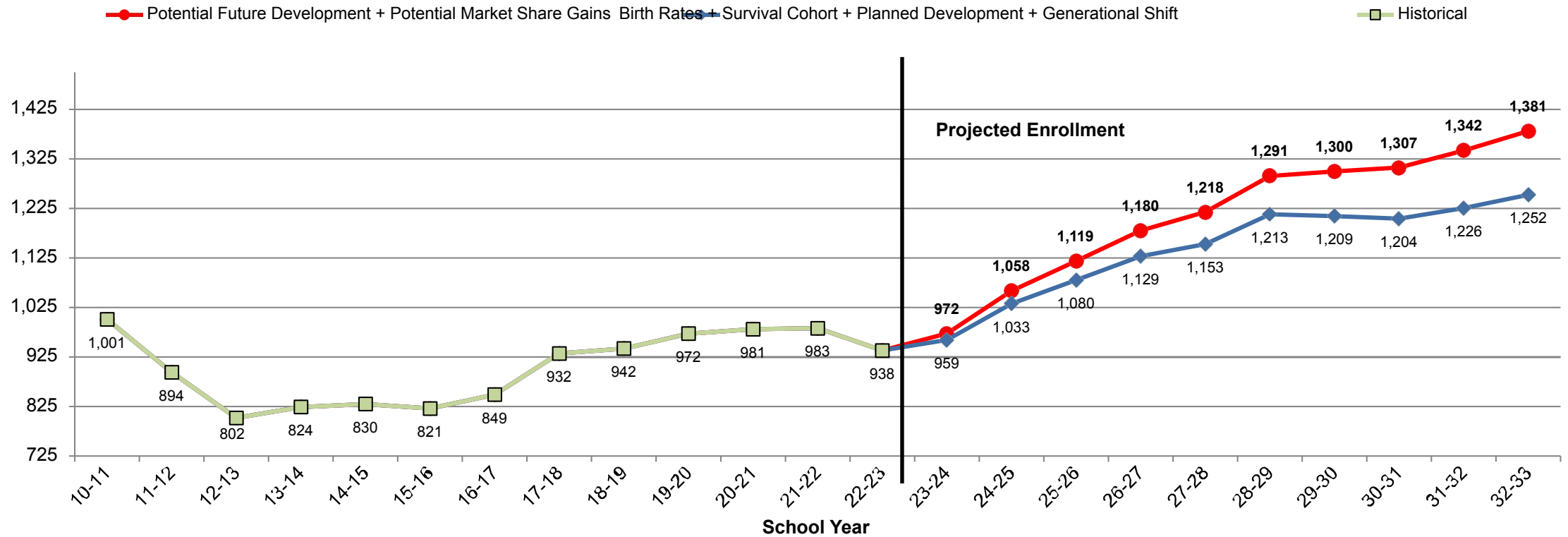
Enrollment Scenarios	Facility Utilization (%) 2022-2023	Facility Utilization (%) 2026-2027	Facility Utilization (%) 2031-2032
Current	89.6%	Not Applicable	Not Applicable
Birth Rates + Survival Cohort + Planned Development + Generational Shift	Not Applicable	104.7%	115.8%
Above Scenarios + Potential Future Development + Potential Market Share	Not Applicable	109.4%	125.1%
Current Capacity	375		

Lake Elmo Elementary Student Enrollment (K-5)



Enrollment Scenarios	Facility Utilization (%) 2022-2023	Facility Utilization (%) 2026-2027	Facility Utilization (%) 2031-2032
Current	96.4%	Not Appllicable	Not Appllicable
Birth Rates + Survival Cohort + Planned Development + Generational Shift	Not Appllicable	118.6%	130.5%
Above Scenarios + Potential Future Development + Potential Market Share	Not Appllicable	121.1%	135.4%

Oak-Land Middle Student Enrollment (6-8)



Enrollment Scenarios	Facility Utilization (%) 2022-2023	Facility Utilization (%) 2026-2027	Facility Utilization (%) 2031-2032
Current	85.7%	Not Applicable	Not Applicable
Birth Rates + Survival Cohort + Planned Development + Generational Shift	Not Applicable	105.3%	114.4%
Above Scenarios + Potential Future Development + Potential Market Share	Not Applicable	111.2%	126.1%