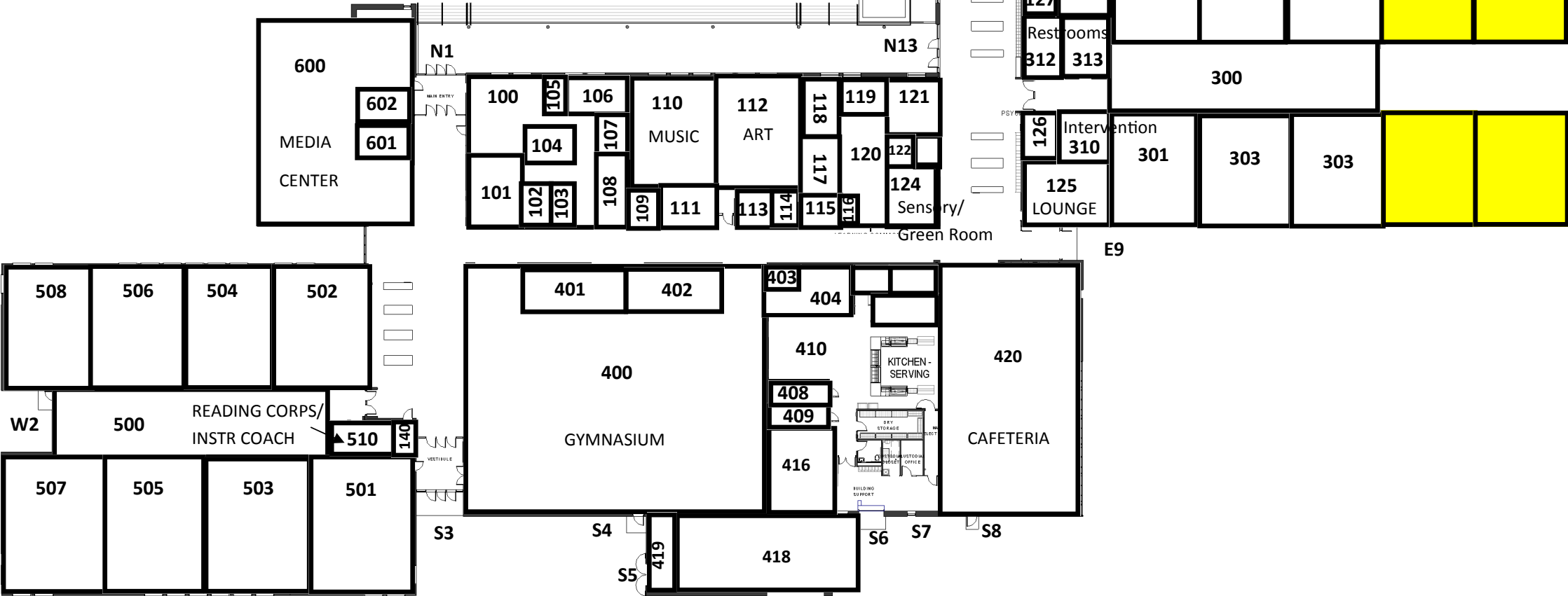


1. Expanding BV by six rooms would allow for programming to be offered in its intended spaces, accommodate for a fourth section of third grade (2020), and provide for up to 75 additional students in the building.
2. Expanding BV by eight rooms would allow for programming to be offered in its intended spaces, accommodate a fourth section of third grade (2020), and provide for up to 125 additional students.
3. You might be wondering why 6 classrooms only gets us 75 students, and 8 classrooms only gets us 125 additional students. This is because, as of December 1, BV enrollment is at 480 - already 30 students over the 450 capacity number. So an additional 125 student would put us at 605 (5 over the build out projection). These additions would also allow for programming to be moved back to its intended spaces.
4. Costs for BV additions were last estimated as of January 15, 2018, and came in at \$4,490,329 (6 classrooms) and \$5,383,645 (8 classrooms).
5. Below is a table of program moves between rooms over the last three years.

	<b>17-18</b>	<b>18-19</b>	<b>19-20</b>
<b>Program</b>	<b>Rooms</b>	<b>Rooms</b>	<b>Rooms</b>
Prek	201/502	130/202	130/210
EL	130	310	310
Art	112	112	Media
Band	210	112/113	211
Orchestra	112	112	101
Intervention	121/211/310	121/211	121/211/Commons

BROOKVIEW ELEMENTARY SCHOOL  
11099 BROOKVIEW ROAD  
WOODBURY, MN 55129

- 8 Additional classrooms
- Restore art room, band/orchestra room, and EL room
- Provide space for an additional 125 students



BROOKVIEW ELEMENTARY SCHOOL

11099 BROOKVIEW ROAD

WOODBURY, MN 55129

- 6 Additional classrooms
- Restore art room, band/orchestra room, and EL room
- Provide space for an additional 75 students

