



FACILITY MASTER PLAN
STILLWATER AREA PUBLIC SCHOOLS

UPDATE

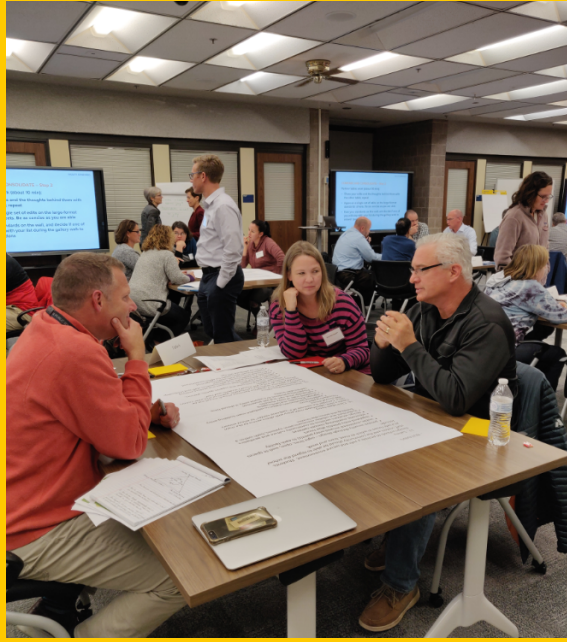
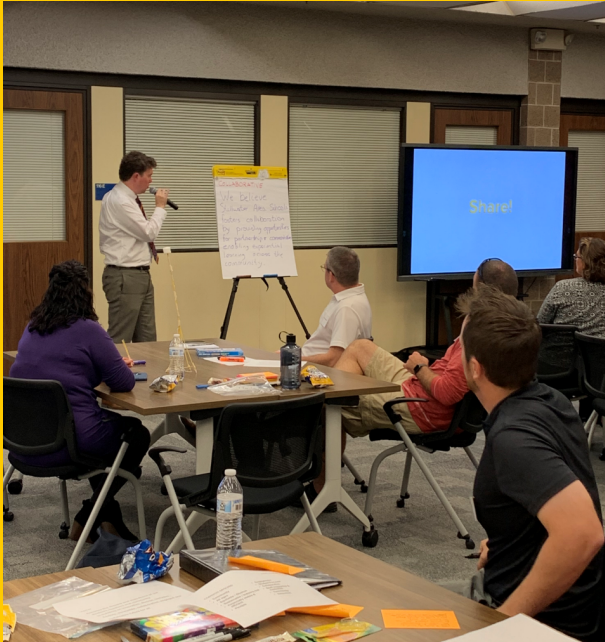
**SCHOOL
BOARD**

11/21/2019



**CUNNINGHAM
G R O U P**

PLANNING PROCESS



PURPOSE

To co-create a clear and compelling Vision for District Facilities and to align the educational program and physical design with this Vision.

WHAT IS A MASTER PLAN?

- 10-15 year road map for the future
- Grounded on your Vision for Learning
- Living/breathing document
- Physically & fiscally responsible
- Allows logical implementation over time

**“THE BEST WAY
TO PREDICT
THE FUTURE
IS TO
DESIGN IT”
—BUCKMINSTER
FULLER**

Stillwater Area Public Schools Mission

To develop curious individuals who are active and engaged leaders in an ever-changing world by challenging all students as they travel along their personalized learning pathways.

Collaborator

- Builds strong relationships
- Works effectively and respectfully with diverse teams
- Seeks out diverse ideas and perspectives
- Values the individual contributions made by each team member

Critical Thinker

- Shows empathy for others
- Solves complex problems
- Discerns accurate, relevant information
- Reasons effectively to make sound judgments and decisions

Creator

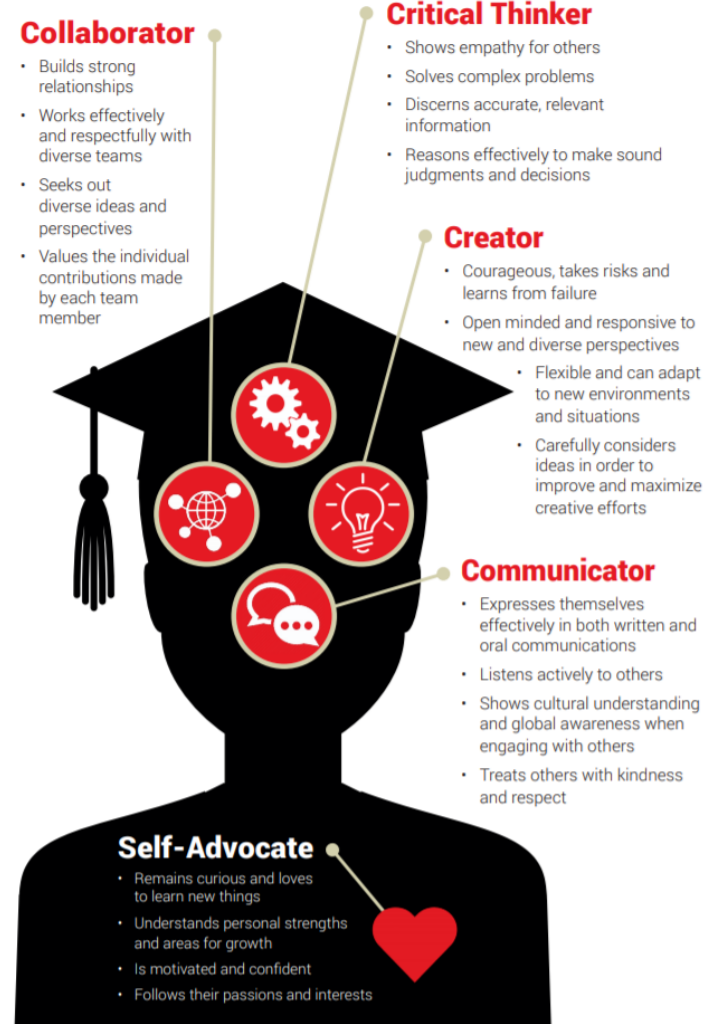
- Courageous, takes risks and learns from failure
- Open minded and responsive to new and diverse perspectives
- Flexible and can adapt to new environments and situations
- Carefully considers ideas in order to improve and maximize creative efforts

Communicator

- Expresses themselves effectively in both written and oral communications
- Listens actively to others
- Shows cultural understanding and global awareness when engaging with others
- Treats others with kindness and respect

Self-Advocate

- Remains curious and loves to learn new things
- Understands personal strengths and areas for growth
- Is motivated and confident
- Follows their passions and interests



HOW ARE DECISIONS MADE?



COMMUNITY DESIGN TEAM PROCESS

Workshop #1 Creating a Shared Vision

Create an understanding of process and develop a design thinking mindset

Establish values to inform a vision statement

Workshop #2 Design Principles

Unveiling the Vision Statement

Generate District Facilities Principles based on the Vision

Workshop #3 Information Forum and Facilities Standards

Share Information on District initiatives, programs, and demographics

Share, Revise and Discuss Facilities Standards

Open House Style Tours

Opportunity to see how the District's buildings support instruction and visit buildings that team members may not be familiar with.

COMMUNITY DESIGN TEAM PROCESS

Workshop #4 Gap Analysis and District Wide Scenarios

Review the survey of how the buildings meet the Standards from Workshop #3

Discuss and Create District Wide Scenarios to address the Gap and District level issues.

Workshop #5 Site Specific Design Workshop

Review the common ground elements and District Wide Scenarios.

Group work to further explore and refine the scenarios, including scope of improvements at individual schools/facilities.

Workshop #6 Synthesis, Phasing, Cost Estimating

Reviewing preliminary cost information

Review potential phasing for implementing the plan

Fine tuning the Master Plan Recommendation

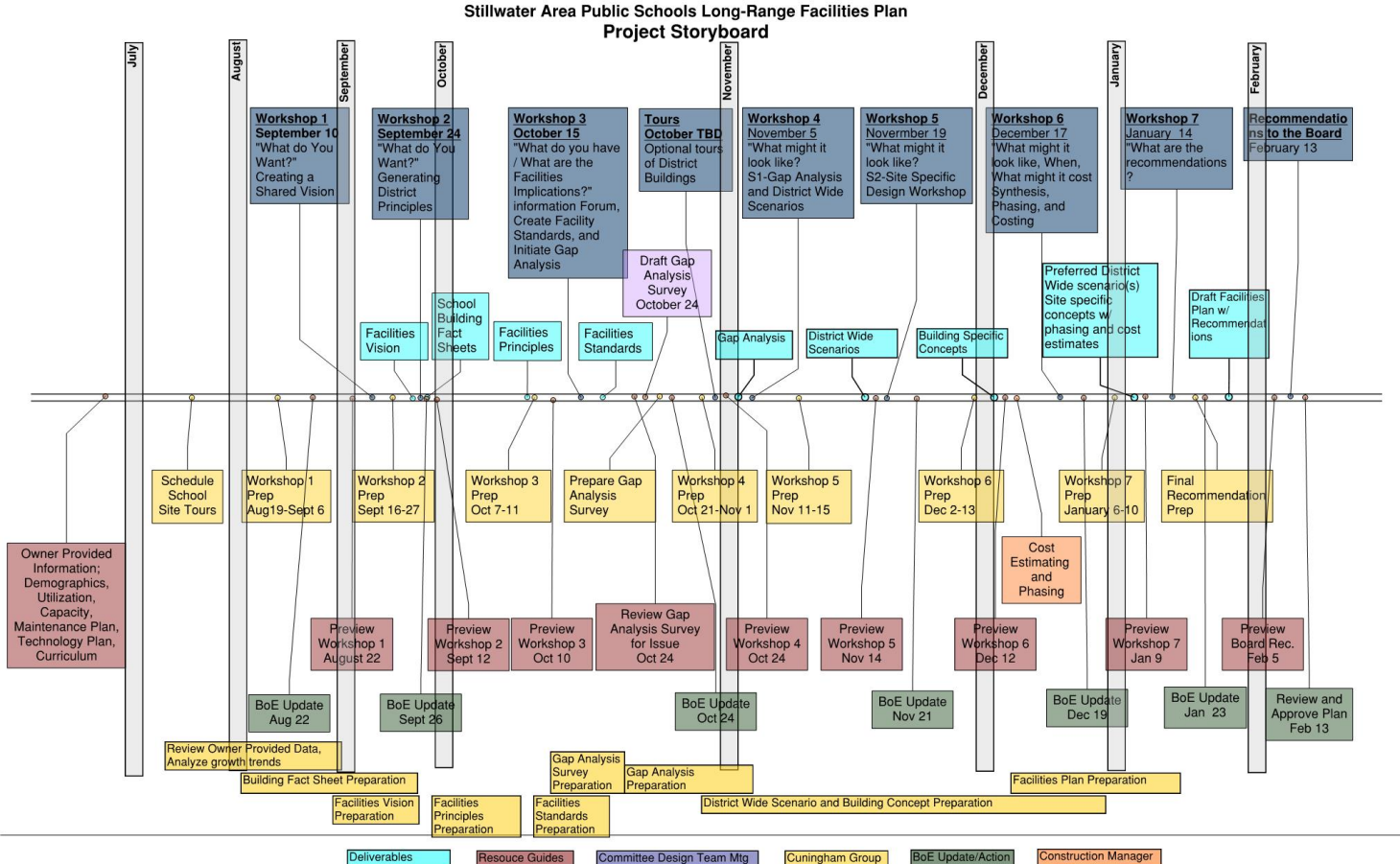
Workshop #7 Creating and Finalizing the Plan

Reviewing, and finalizing the plan.

COMMUNITY DESIGN TEAM SCHEDULE

- **Workshop 1** September 10 - Creating a Shared Facility Vision
- **Workshop 2** September 24 – Generating Facility Principles
- **Workshop 3** October 15 – Information Forum and Creating Facility Standards
- **Building Tours** October 16, 23, 30 – Optional Open House Style Tours
- **Workshop 4** November 4 – Gap Analysis Review and District Wide Scenarios
- **Workshop 5** November 19 – Refining District Wide Scenarios / Common Ground
- **Workshop 6** December 17 – Synthesis, Phasing, Cost Estimating

LONG RANGE FACILITIES PLAN PROCESS



WHAT'S BEEN DISCUSSED



FORCES OF CHANGE

- Population / Demographic changes
- School day and hours
- technology
- On-line, non-classroom learning
- Student involvement / activism
- Political shifts
- Work force – industry – automation
- How we communicate
- Funding
- Security
- Problem-based learning
- Teacher shortage/ Teacher training
- Environment / Climate
- Individual Educational Plans
- Uncertainty
- Cultural evolution (diversity)
- The cost of higher education
- Gender roles (women on the rise)
- Stress/mental health
- Access to information
- Modes of transportation
- Competition and choices
- Global communication (but connections are more superficial)

PRECONCEPTIONS:

{ i.e. limiting beliefs }



LIMITING BELIEFS

- Don't have enough money
- School should be the way it was for me.
- Fear
- Federal directives – no control/ someone else's fault
- Diverse opinions/perspectives not needed
- Everybody wants something different
- Adults problem
- Has to be perfect
- We've always done it this way.
- 7:30 – 3:30 | Monday – Friday schedule
- Learning is limited to a box
- Too busy
- Standardized tests
- Test scores focus
- Community attitudes range → no common ground
- All talk!
- We are the best; no need to change

FACILITIES FRAMEWORK: VISION, PRINCIPLES, STANDARDS

VISION

Enhance the dreams and aspirations of our students, teachers and community in building an innovative, diverse, inclusive, flexible, accessible, collaborative and sustainable future for all.

- We envision environmentally friendly places that are community assets for learning and development of students of all ages in a variety of capacities, both indoor and outdoor.
- We envision fiscally sustainable and efficient learning centers that invest in innovative learning styles, opportunities, and techniques.
- We envision learner centered, community driven, safe, flexible and environmentally rich space for all students, teachers and community.
- We envision a space that encourages and supports diverse viewpoints and identities to strengthen and enrich learning experiences.
- We envision spaces that support all students with access to mental health resources and academic support for all.
- We envision progressive environments that promote community engagement.

Principles: Overarching beliefs and commitments to what's important for all Stillwater Area Public Schools

Community

Stillwater Schools are committed to providing facilities that are the center of our community. We believe our facilities should be open/accessible, inviting, flexible and safe for all who live in our community.

Collaboration

Stillwater Area Schools are committed to fostering collaboration in learning by providing opportunities for partnership, communication and experiences across the whole community.

Innovation

Stillwater schools are committed to creating flexible, open spaces and innovative curriculum to foster creative, openminded, collaborative, and problem-based learning.

Student focus

Stillwater Area Public Schools are committed to student-focused facilities and instruction that encourage and entice all students to explore and develop their ambitions and identity in a holistic way, so all may flourish.

Engagement

Stillwater Schools are committed to being a place that motivates a high level of learning.

Sustainable – Ecologically and Financially

Stillwater Area Schools are committed to good use of resources in construction and operation of facilities, aligning facilities with current and future community *needs*, in ways that provide value.

Equitable / Diverse

Stillwater Area Public Schools are committed to facilities that are equitable and meet diverse needs. The quality of a student's learning should not be dependent on the community/ neighborhood they live in.

Flexible

Stillwater Area Public Schools are committed to facilities that are flexible and enhance the experience for students, staff and community to meet current and future needs.

Supportive

Stillwater Area Public Schools are committed to providing a quality environment that supports all staff and students. Considerations for age-appropriate spaces, located ideally (e.g. bathrooms and playgrounds)

Standards: define consistency, value and quality for physical facilities as they are maintained, improved or built

Building

1. Basic Learning Space
2. Varied Space for Program Delivery
3. Student Gathering Space
4. Assembly Space
5. Interdisciplinary Learning
6. Specialized Lab/Studio Space
7. Shared Space for Programs
8. Special Services Needs
9. Space for Young Children and Parents
10. Personalized Learning Space
11. Space for Enriching Activities
12. Staff Resource and Collaboration Space
13. Adult Learning Space
14. Daylighting and Views
15. Accessible Buildings
16. Community Support Centers
17. Safety
18. Clear Main Entry
19. Welcoming Main Office
20. Health Services Space
21. Facilities for Media Centers
22. Food Service
23. Technology Space
24. Storage Space
25. Plumbing Core
26. Internal Circulation

Interiors and Finishes

27. Flexible/Adaptable Space
28. Signage and Display
29. Experiential Interiors
30. Furniture and Finishes for Learning

Systems

31. Quality HVAC/Plumbing
32. Ample Electrical Service and Systems
33. Technology Infrastructure and Hardware
34. Technology-Enhanced Systems

Site

35. Safe and Accessible
36. Traffic Control
37. Parking and Service Access
38. Landscape Character
39. Safe & Accessible Outdoor Play
40. Outdoor Learning Settings
41. Planned Expansion
42. Permanent Facilities

Community / Off-Site

43. Community/Off-Site Learning Settings
44. Joint-Use Facilities
45. Connections between School Sites

Gap Analysis

How do existing buildings rate compared to Facility Standards?

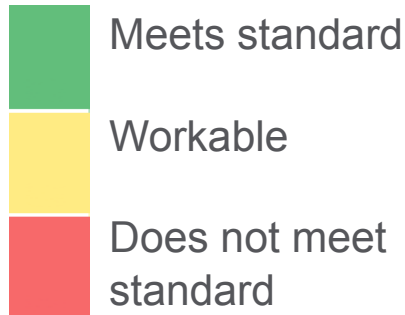


Stillwater Area Public Schools Gap Analysis Report – PK-12

Buildings	Early Childhood Family Center	Afton-Lakeland Elementary	Andersen	Brookview Elementary	Lake Elmo Elementary School	Lily Lake Elementary	Rutherford Elementary	Stonebridge Elem.	Oak-Land Middle School	Stillwater Middle School	Stillwater Area High School
BUILDING											
BASIC LEARNING SPACE	Meets standard	Workable	Does not meet standard	Meets standard	Does not meet standard	Workable	Meets standard	Workable	Workable	Workable	Workable
VARIED SPACE FOR PROGRAM DELIVERY	Meets standard	Workable	Does not meet standard	Meets standard	Does not meet standard	Workable	Meets standard	Workable	Workable	Workable	Workable
STUDENT GATHERING SPACE	Meets standard	Workable	Does not meet standard	Meets standard	Does not meet standard	Workable	Meets standard	Workable	Workable	Workable	Workable
ASSEMBLY SPACE	Meets standard	Workable	Does not meet standard	Meets standard	Does not meet standard	Workable	Meets standard	Workable	Workable	Workable	Workable
INTERDISCIPLINARY LEARNING	Meets standard	Workable	Does not meet standard	Meets standard	Does not meet standard	Workable	Meets standard	Workable	Workable	Workable	Workable
SPECIALIZED LAB / STUDIO SPACE FOR PROGRAM DELIVERY	Meets standard	Workable	Does not meet standard	Meets standard	Does not meet standard	Workable	Meets standard	Workable	Workable	Workable	Workable
SHARED SPACE FOR PROGRAMS	Meets standard	Workable	Does not meet standard	Meets standard	Does not meet standard	Workable	Meets standard	Workable	Workable	Workable	Workable
SPECIAL SERVICES NEEDS	Meets standard	Workable	Does not meet standard	Meets standard	Does not meet standard	Workable	Meets standard	Workable	Workable	Workable	Workable
SPACE FOR YOUNG CHILDREN AND PARENTS	Meets standard	Workable	Does not meet standard	Meets standard	Does not meet standard	Workable	Meets standard	Workable	Workable	Workable	Workable
PERSONALIZED LEARNING SPACE	Meets standard	Workable	Does not meet standard	Meets standard	Does not meet standard	Workable	Meets standard	Workable	Workable	Workable	Workable
SPACE FOR ENRICHING ACTIVITIES	Meets standard	Workable	Does not meet standard	Meets standard	Does not meet standard	Workable	Meets standard	Workable	Workable	Workable	Workable
STAFF RESOURCE AND COLLABORATION SPACE	Meets standard	Workable	Does not meet standard	Meets standard	Does not meet standard	Workable	Meets standard	Workable	Workable	Workable	Workable
ADULT LEARNING SPACE	Meets standard	Workable	Does not meet standard	Meets standard	Does not meet standard	Workable	Meets standard	Workable	Workable	Workable	Workable
DAYLIGHTING AND VIEWS	Meets standard	Workable	Does not meet standard	Meets standard	Does not meet standard	Workable	Meets standard	Workable	Workable	Workable	Workable
ACCESSIBLE BUILDINGS	Meets standard	Workable	Does not meet standard	Meets standard	Does not meet standard	Workable	Meets standard	Workable	Workable	Workable	Workable
COMMUNITY SUPPORT CENTERS	Meets standard	Workable	Does not meet standard	Meets standard	Does not meet standard	Workable	Meets standard	Workable	Workable	Workable	Workable
SAFETY	Meets standard	Workable	Does not meet standard	Meets standard	Does not meet standard	Workable	Meets standard	Workable	Workable	Workable	Workable
CLEAR MAIN ENTRY	Meets standard	Workable	Does not meet standard	Meets standard	Does not meet standard	Workable	Meets standard	Workable	Workable	Workable	Workable
WELCOMING MAIN OFFICE	Meets standard	Workable	Does not meet standard	Meets standard	Does not meet standard	Workable	Meets standard	Workable	Workable	Workable	Workable
HEALTH SERVICES SPACE	Meets standard	Workable	Does not meet standard	Meets standard	Does not meet standard	Workable	Meets standard	Workable	Workable	Workable	Workable
FACILITIES FOR MEDIA CENTERS	Meets standard	Workable	Does not meet standard	Meets standard	Does not meet standard	Workable	Meets standard	Workable	Workable	Workable	Workable
FOOD SERVICE AND DINING	Meets standard	Workable	Does not meet standard	Meets standard	Does not meet standard	Workable	Meets standard	Workable	Workable	Workable	Workable
TECHNOLOGY SPACE	Meets standard	Workable	Does not meet standard	Meets standard	Does not meet standard	Workable	Meets standard	Workable	Workable	Workable	Workable
STORAGE SPACE	Meets standard	Workable	Does not meet standard	Meets standard	Does not meet standard	Workable	Meets standard	Workable	Workable	Workable	Workable
PLUMBING CORE	Meets standard	Workable	Does not meet standard	Meets standard	Does not meet standard	Workable	Meets standard	Workable	Workable	Workable	Workable
INTERNAL CIRCULATION	Meets standard	Workable	Does not meet standard	Meets standard	Does not meet standard	Workable	Meets standard	Workable	Workable	Workable	Workable
COMMUNITY / OFF-SITE											
COMMUNITY / OFF-SITE LEARNING SETTINGS	Meets standard	Workable	Does not meet standard	Meets standard	Does not meet standard	Workable	Meets standard	Workable	Workable	Workable	Workable
JOINT-USE FACILITIES	Meets standard	Workable	Does not meet standard	Meets standard	Does not meet standard	Workable	Meets standard	Workable	Workable	Workable	Workable
CONNECTIONS BETWEEN SCHOOL SITES	Meets standard	Workable	Does not meet standard	Meets standard	Does not meet standard	Workable	Meets standard	Workable	Workable	Workable	Workable
INTERIORS AND FINISHES											
FLEXIBLE / ADAPTABLE SPACE	Meets standard	Workable	Does not meet standard	Meets standard	Does not meet standard	Workable	Meets standard	Workable	Workable	Workable	Workable
SIGNAGE AND DISPLAY	Meets standard	Workable	Does not meet standard	Meets standard	Does not meet standard	Workable	Meets standard	Workable	Workable	Workable	Workable
EXPERIENTIAL INTERIORS	Meets standard	Workable	Does not meet standard	Meets standard	Does not meet standard	Workable	Meets standard	Workable	Workable	Workable	Workable
FURNITURE AND FINISHES FOR LEARNING	Meets standard	Workable	Does not meet standard	Meets standard	Does not meet standard	Workable	Meets standard	Workable	Workable	Workable	Workable
SITE											
SAFE AND ACCESSIBLE	Meets standard	Workable	Does not meet standard	Meets standard	Does not meet standard	Workable	Meets standard	Workable	Workable	Workable	Workable
TRAFFIC CONTROL	Meets standard	Workable	Does not meet standard	Meets standard	Does not meet standard	Workable	Meets standard	Workable	Workable	Workable	Workable
PARKING AND SERVICE ACCESS	Meets standard	Workable	Does not meet standard	Meets standard	Does not meet standard	Workable	Meets standard	Workable	Workable	Workable	Workable
LANDSCAPE CHARACTER	Meets standard	Workable	Does not meet standard	Meets standard	Does not meet standard	Workable	Meets standard	Workable	Workable	Workable	Workable
SAFE, ACCESSIBLE, AND INCLUSIVE OUTDOOR PLAY	Meets standard	Workable	Does not meet standard	Meets standard	Does not meet standard	Workable	Meets standard	Workable	Workable	Workable	Workable
OUTDOOR LEARNING SETTINGS	Meets standard	Workable	Does not meet standard	Meets standard	Does not meet standard	Workable	Meets standard	Workable	Workable	Workable	Workable
PLANNED EXPANSION	Meets standard	Workable	Does not meet standard	Meets standard	Does not meet standard	Workable	Meets standard	Workable	Workable	Workable	Workable
PERMANENT FACILITIES	Meets standard	Workable	Does not meet standard	Meets standard	Does not meet standard	Workable	Meets standard	Workable	Workable	Workable	Workable
SYSTEMS											
QUALITY HVAC / PLUMBING	Meets standard	Workable	Does not meet standard	Meets standard	Does not meet standard	Workable	Meets standard	Workable	Workable	Workable	Workable
AMPLE ELECTRICAL SERVICE SYSTEMS AND LIGHTING	Meets standard	Workable	Does not meet standard	Meets standard	Does not meet standard	Workable	Meets standard	Workable	Workable	Workable	Workable
TECHNOLOGY INFRASTRUCTURE AND HARDWARE	Meets standard	Workable	Does not meet standard	Meets standard	Does not meet standard	Workable	Meets standard	Workable	Workable	Workable	Workable
TECHNOLOGICALLY ENHANCED SYSTEMS	Meets standard	Workable	Does not meet standard	Meets standard	Does not meet standard	Workable	Meets standard	Workable	Workable	Workable	Workable

Gap Analysis

Stillwater Area Public Schools Gap Analysis Report – Other buildings



Question Category	Transitions	Oak Park	Withrow Elementary	Withrow	Central Services Building
BUILDING					
BASIC LEARNING SPACE	Workable	Meets standard	Workable	Workable	
VARIED SPACE FOR PROGRAM DELIVERY	Does not meet standard	Workable	Workable	Does not meet standard	
STUDENT GATHERING SPACE	Does not meet standard	Meets standard	Workable	Workable	
ASSEMBLY SPACE	Workable	Meets standard	Workable	Workable	
INTERDISCIPLINARY LEARNING	Does not meet standard	Workable	Workable	Workable	
SPECIALIZED LAB / STUDIO SPACE FOR PROGRAM DELIVERY	Does not meet standard	Workable	Workable	Does not meet standard	
SHARED SPACE FOR PROGRAMS	Does not meet standard	Workable	Workable	Does not meet standard	
SPECIAL SERVICES NEEDS	Does not meet standard	Workable	Workable	Does not meet standard	
SPACE FOR YOUNG CHILDREN AND PARENTS	Does not meet standard	Workable	Workable	Does not meet standard	
PERSONALIZED LEARNING SPACE	Does not meet standard	Workable	Workable	Does not meet standard	
SPACE FOR ENRICHING ACTIVITIES	Does not meet standard	Workable	Workable	Does not meet standard	
STAFF RESOURCE AND COLLABORATION SPACE	Workable	Meets standard	Workable	Does not meet standard	Workable
ADULT LEARNING SPACE	Meets standard	Meets standard	Workable	Does not meet standard	
DAYLIGHTING AND VIEWS	Workable	Meets standard	Meets standard	Workable	Workable
ACCESSIBLE BUILDINGS	Does not meet standard	Meets standard	Meets standard	Workable	Workable
COMMUNITY SUPPORT CENTERS	Does not meet standard	Workable	Workable	Workable	Workable
SAFETY	Does not meet standard	Meets standard	Meets standard	Meets standard	Workable
CLEAR MAIN ENTRY	Workable	Meets standard	Meets standard	Meets standard	Meets standard
WELCOMING MAIN OFFICE	Workable	Meets standard	Meets standard	Workable	Meets standard
HEALTH SERVICES SPACE	Workable	Meets standard	Workable	Workable	
FACILITIES FOR MEDIA CENTERS	Workable	Meets standard	Workable	Workable	
FOOD SERVICE AND DINING	Does not meet standard	Workable	Meets standard	Workable	Workable
TECHNOLOGY SPACE	Does not meet standard	Meets standard	Workable	Workable	Workable
STORAGE SPACE	Does not meet standard	Workable	Workable	Workable	Workable
PLUMBING CORE	Does not meet standard	Workable	Meets standard	Workable	Workable
INTERNAL CIRCULATION	Workable	Meets standard	Workable	Workable	Workable
COMMUNITY / OFF-SITE					
COMMUNITY / OFF-SITE LEARNING SETTINGS	Meets standard	Workable	Does not meet standard	Workable	
JOINT-USE FACILITIES	Workable	Workable	Workable	Workable	
CONNECTIONS BETWEEN SCHOOL SITES	Workable	Workable	Does not meet standard	Workable	Meets standard
INTERIORS AND FINISHES					
FLEXIBLE / ADAPTABLE SPACE	Does not meet standard	Workable	Workable	Workable	Workable
SIGNAGE AND DISPLAY	Does not meet standard	Meets standard	Workable	Workable	Workable
EXPERIENTIAL INTERIORS	Does not meet standard	Meets standard	Workable	Workable	Workable
FURNITURE AND FINISHES FOR LEARNING	Does not meet standard	Workable	Workable	Does not meet standard	Does not meet standard
SITE					
SAFE AND ACCESSIBLE	Does not meet standard	Workable	Meets standard	Workable	Meets standard
TRAFFIC CONTROL	Workable	Workable	Workable	Workable	Meets standard
PARKING AND SERVICE ACCESS	Workable	Workable	Workable	Workable	Workable
LANDSCAPE CHARACTER	Workable	Workable	Workable	Meets standard	Workable
SAFE, ACCESSIBLE, AND INCLUSIVE OUTDOOR PLAY	Does not meet standard	Meets standard	Meets standard	Does not meet standard	
OUTDOOR LEARNING SETTINGS	Does not meet standard	Meets standard	Workable	Does not meet standard	
PLANNED EXPANSION	Workable	Meets standard	Workable	Does not meet standard	Workable
PERMANENT FACILITIES	Workable	Meets standard	Meets standard	Workable	Workable
SYSTEMS					
QUALITY HVAC / PLUMBING	Does not meet standard	Meets standard	Meets standard	Workable	Workable
AMPLE ELECTRICAL SERVICE SYSTEMS AND LIGHTING	Does not meet standard	Workable	Workable	Workable	Workable
TECHNOLOGY INFRASTRUCTURE AND HARDWARE	Workable	Workable	Workable	Workable	Workable
TECHNOLOGICALLY ENHANCED SYSTEMS	Workable	Meets standard	Meets standard	Workable	Workable

BUILDING TOURS



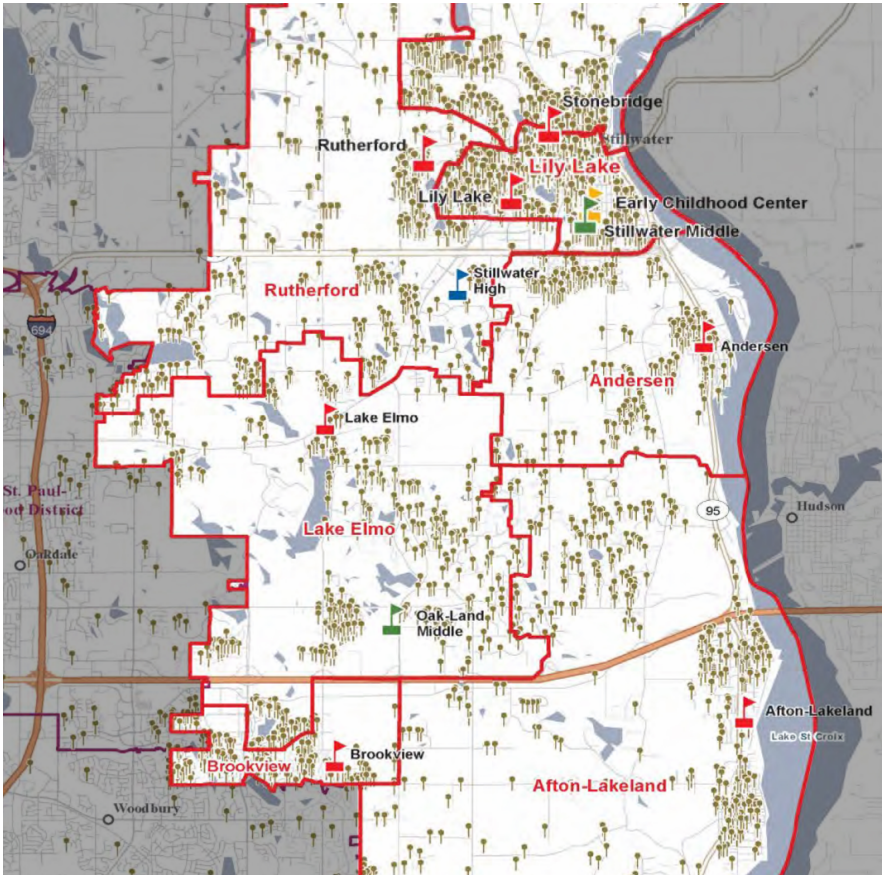
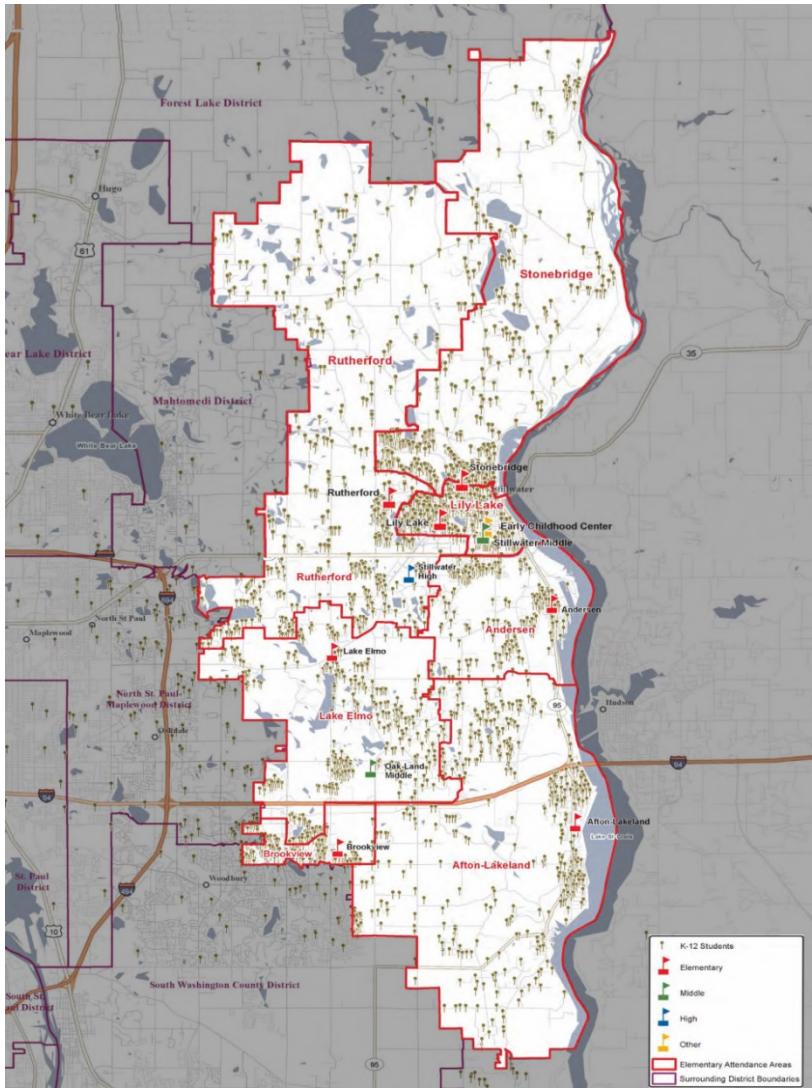
Programming/Spaces

PreK-Transitions

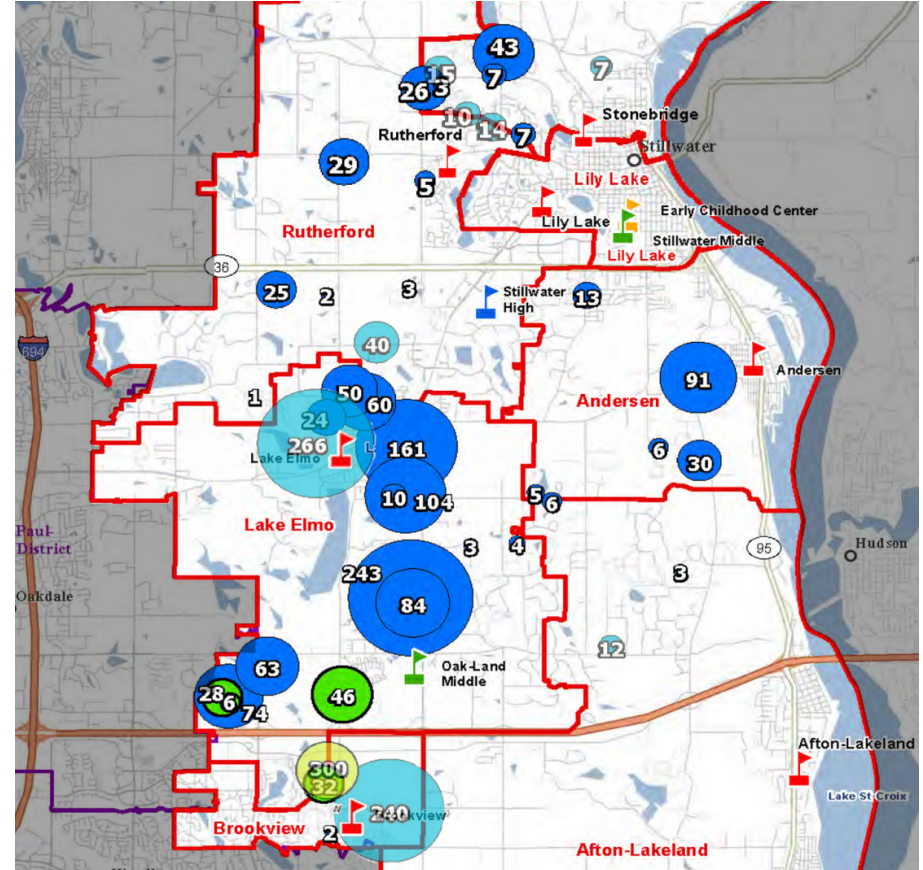
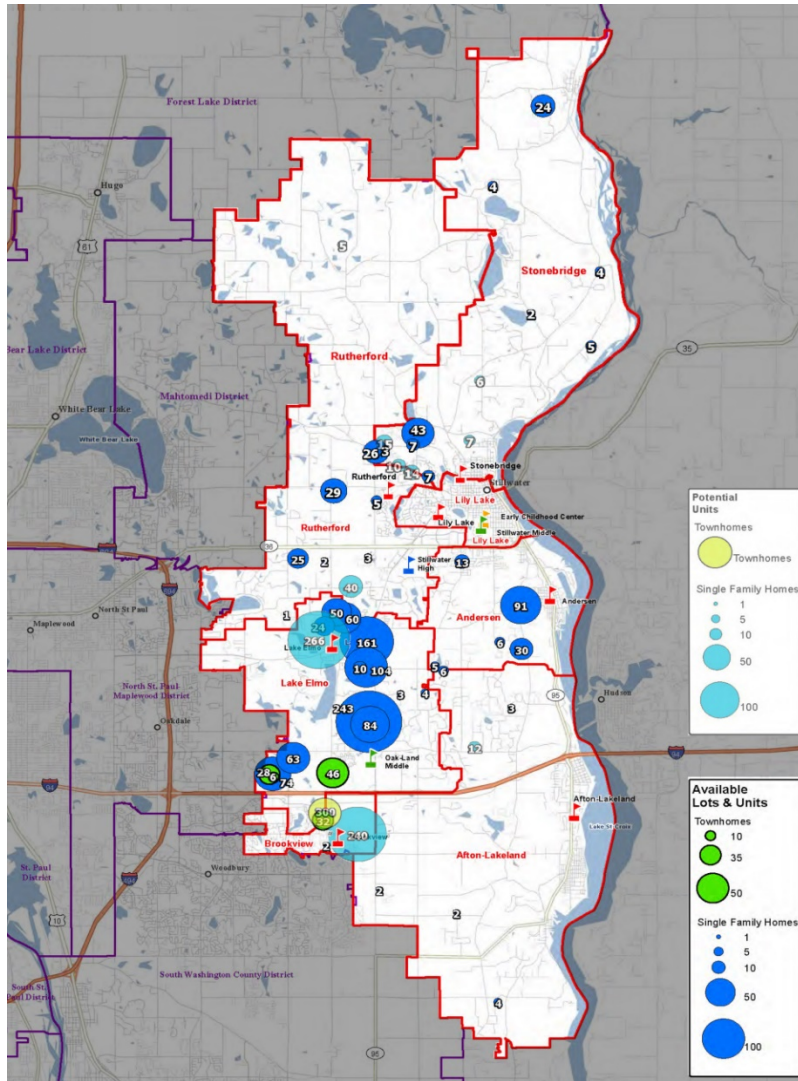
Demographics

**DISTRICT-WIDE
SCENARIOS
WORKSHOP #4**

ENROLLMENT – WHERE ARE THE STUDENTS?

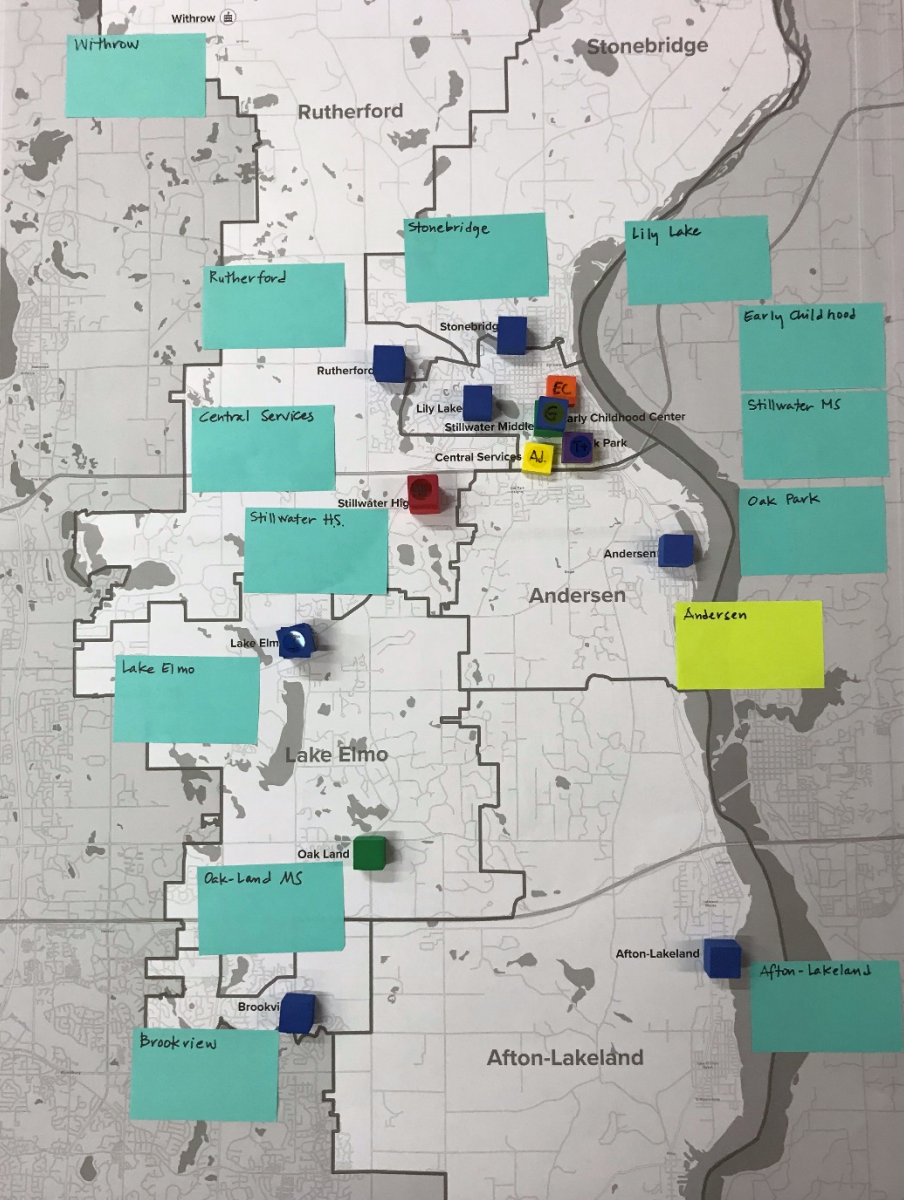


ENROLLMENT – WHERE IS THE GROWTH?



DISTRICT-WIDE PLANNING – WORKSHOP #4

How will you align enrollment growth, district facility resources and possible facility improvements, in the context of the Vision, Principles and Standards?



BLOCK KEY

- Early Childhood
- K-5th Grade
- K-5 Immersion
- 4-5 GATE
- 6-8th Grade
- 9-12th Grade
- ALC (HS)
- Transitions +
- Administration

**COMMON
GROUND**

COMMON GROUND	
Replace, move, +/-or sell Lake Elmo Elementary	9
Expand Brookview	8
Relocate ALC to Oak Park or Central Services	6
Relocate Central Services to Oak Park Building	5
Keep Transitions in Oak Park	5
Move Transitions to Central Services	4
Expand Andersen	4
Dual Immersion stays in South Side where the students are	4
Renovate all buildings to 21-century learning standards	3+
Build new elementary school on South side of the district	3
New Early Childhood Family Education Center in South, or additional PK sections throughout	2+2
Sell Withrow	3+

OUTLIERS	
Build new middle school; use Oak-Land as an elementary school	2
Sell Central Services building	2
Explore uses for Withrow/ potentially move Transitions there	2
Relocate Admin or part of Admin to Transportation Building	1+1
Relocate GATE 4/5 to Stonebridge	1
Additional Community Education programs at Oak Park or Lake Elmo	1
Career +Tech center at Oak Park for alternative High School path	1
Salvage part of Lake Elmo for Central Services	1
Expand Central Services and bring in Transition and ALC programs	1
Close Anderson Elementary	1
Consider larger elementary if efficiencies/outcomes support it	1
Oak Park Options: Consider 200-student or 400-student elementary ++	1

NEXT STEPS

QUESTIONS?



CUNINGHAM
G R O U P

uplifting the human experience[®]

Architecture Interior Design Urban Design Landscape Architecture
MINNEAPOLIS LOS ANGELES LAS VEGAS DENVER SAN DIEGO PHOENIX BEIJING DOHA

ISD NO. 834, STILLWATER AREA PUBLIC SCHOOLS

REFUNDING (REFINANCING) OF SERIES 2011A CERTIFICATES OF
PARTICIPATION (COPS) – FINAL CERTIFICATE SALE RESULTS

SCHOOL BOARD MEETING DATE: NOVEMBER 21, 2019

Matt Rantapaa
Robert W. Baird & Co.
Senior Vice President
(651) 426-8533, ext. 3
[mrantapaa@rwbaird.co](mailto:mrantapaa@rwbaird.com)
[m](mailto:mrantapaa@rwbaird.com)

Table of Contents

I. Summary of Underwriting Bids

3


II. FINAL Savings Summary

4

III. Next Steps

5

I. Summary of Underwriting Bids

Wire InboxParity CalendarDeal List

11:04:50 a.m. CDSTUpcoming CalendarOverviewCompareSummary

Bid Results

Stillwater ISD #834
Refunding Certificates of Participation, Series 2019A

The following bids were submitted using **PARITY**[®] and displayed ranked by lowest TIC.
Click on the name of each bidder to see the respective bids.

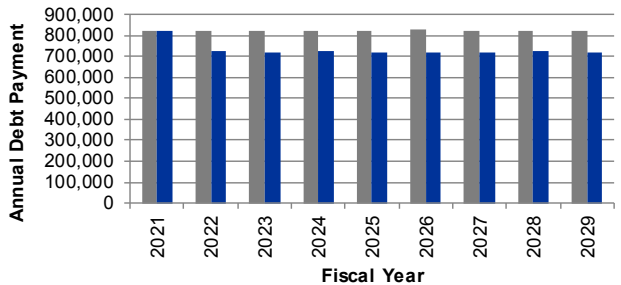
Bid Award*	Bidder Name	TIC
<input type="checkbox"/>	Piper Jaffray	1.849261
<input type="checkbox"/>	Northland Securities, Inc.	2.018799

II. FINAL Savings Summary

ASSUMPTIONS

- (1) Series 2019A Certificates will current refund Certificates of Participation, Series 2011A; Dated/Closing Date of December 11, 2019.
- (2) Series 2011A 2021-2029 maturities refunded on the first optional redemption date of February 1, 2020. District will make scheduled February 1, 2020 certificate payment.
- (3) District received Moody's Aa3 underlying rating on the Certificates.

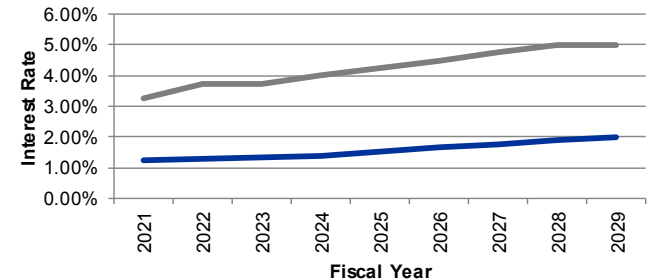
2011A COP CURRENT REFUNDING - FINAL SALE RESULTS



■ Old Series 2011A Payments ■ New Series 2019A Payments

How do we achieve the savings shown on the left?

By exchanging old interest rates with new interest rates shown to the right.



— New Series 2019A Yields — Old Series 2011A Interest Rates

Fiscal Year	Old Series 2011A Payments	New Series 2019A Payments	Estimated Gross Savings (net of all costs)
2021	822,313	819,589	2,724
2022	823,950	723,400	100,550
2023	822,013	721,400	100,613
2024	824,325	723,600	100,725
2025	824,125	719,800	104,325
2026	826,288	720,200	106,088
2027	825,463	719,600	105,863
2028	821,500	723,000	98,500
2029	824,250	719,100	105,150
Totals	7,414,225	6,589,689	824,536

Available funds due to \$5,000 Rounding

2,957

Total Gross Savings

827,493

Savings is net of financing costs

Savings estimate shared with school board previously was \$850,110

Additional Facts

5,630,000 FINAL Par Amount of Refunding Certificates
95,800 FINAL Costs of Issuing Debt
10.07% NPV Benefit of Refunded Debt Savings

Maturity	New Series 2019A Yields	Old Series 2011A Interest Rates
2021	1.25%	3.25%
2022	1.30%	3.75%
2023	1.35%	3.75%
2024	1.40%	4.00%
2025	1.55%	4.25%
2026	1.65%	4.50%
2027	1.75%	4.75%
2028	1.90%	5.00%
2029	2.00%	5.00%

III. Next Steps

- **Adopt Awarding Resolution for the Certificates being considered at tonight's meeting**
 - **Adoption of this Resolution does the following:**
 - **Awards the underwriting bid to Piper Jaffray**
 - **Locks in the savings and final payment schedule for 2019A Refunding Certificates of Participation**
- **Closing Date: December 11, 2019**
- **2011A Certificates Refunded (refinanced) on first optional call date of February 1, 2020**

Questions?