



# Facility Priorities

*School Board Work Session  
November 5, 2020*

# Community Design Team (CDT)

- Diverse group of parents, community and staff representing all areas of district
- Met 7 times from Sept. 2019 - Jan. 2020
- Considered long-term facility needs of the district
- Presented recommendation to school board Feb. 2020





| Question Category                                   | Early Childhood<br>Family Center | Alton<br>Lakeland<br>Elementary | Andersen | Brookview<br>Elementary | Lake Elmo<br>Elementary<br>School | Lily Lake<br>Elementary | Rutherford<br>Elementary | Stonebridge<br>Elem. | Oak-Land<br>Middle<br>School | Stillwater<br>Middle School | Stillwater<br>Area High<br>School | Transitions | Oak Park | Withdraw Elementary | Withdraw | Central Services Building |
|---|----------------------------------|---------------------------------|----------|-------------------------|-----------------------------------|-------------------------|--------------------------|----------------------|------------------------------|-----------------------------|-----------------------------------|-------------|----------|---------------------|----------|---------------------------|
| <b>BUILDING</b>                                     |                                  |                                 |          |                         |                                   |                         |                          |                      |                              |                             |                                   |             |          |                     |          |                           |
| BASIC LEARNING SPACE                                |                                  |                                 |          |                         |                                   |                         |                          |                      |                              |                             |                                   |             |          |                     |          |                           |
| VARIED SPACE FOR PROGRAM DELIVERY                   |                                  |                                 |          |                         |                                   |                         |                          |                      |                              |                             |                                   |             |          |                     |          |                           |
| STUDENT GATHERING SPACE                             |                                  |                                 |          |                         |                                   |                         |                          |                      |                              |                             |                                   |             |          |                     |          |                           |
| ASSEMBLY SPACE                                      |                                  |                                 |          |                         |                                   |                         |                          |                      |                              |                             |                                   |             |          |                     |          |                           |
| INTERDISCIPLINARY LEARNING                          |                                  |                                 |          |                         |                                   |                         |                          |                      |                              |                             |                                   |             |          |                     |          |                           |
| SPECIALIZED LAB / STUDIO SPACE FOR PROGRAM DELIVERY |                                  |                                 |          |                         |                                   |                         |                          |                      |                              |                             |                                   |             |          |                     |          |                           |
| SHARED SPACE FOR PROGRAMS                           |                                  |                                 |          |                         |                                   |                         |                          |                      |                              |                             |                                   |             |          |                     |          |                           |
| SPECIAL SERVICES NEEDS                              |                                  |                                 |          |                         |                                   |                         |                          |                      |                              |                             |                                   |             |          |                     |          |                           |
| SPACE FOR YOUNG CHILDREN AND PARENTS                |                                  |                                 |          |                         |                                   |                         |                          |                      |                              |                             |                                   |             |          |                     |          |                           |
| PERSONALIZED LEARNING SPACE                         |                                  |                                 |          |                         |                                   |                         |                          |                      |                              |                             |                                   |             |          |                     |          |                           |
| SPACE FOR ENRICHING ACTIVITIES                      |                                  |                                 |          |                         |                                   |                         |                          |                      |                              |                             |                                   |             |          |                     |          |                           |
| STAFF RESOURCE AND COLLABORATION SPACE              |                                  |                                 |          |                         |                                   |                         |                          |                      |                              |                             |                                   |             |          |                     |          |                           |
| ADULT LEARNING SPACE                                |                                  |                                 |          |                         |                                   |                         |                          |                      |                              |                             |                                   |             |          |                     |          |                           |
| DAYLIGHTING AND VIEWS                               |                                  |                                 |          |                         |                                   |                         |                          |                      |                              |                             |                                   |             |          |                     |          |                           |
| ACCESSIBLE BUILDINGS                                |                                  |                                 |          |                         |                                   |                         |                          |                      |                              |                             |                                   |             |          |                     |          |                           |
| COMMUNITY SUPPORT CENTERS                           |                                  |                                 |          |                         |                                   |                         |                          |                      |                              |                             |                                   |             |          |                     |          |                           |
| SAFETY  |                                  |                                 |          |                         |                                   |                         |                          |                      |                              |                             |                                   |             |          |                     |          |                           |
| CLEAR MAIN ENTRY                                    |                                  |                                 |          |                         |                                   |                         |                          |                      |                              |                             |                                   |             |          |                     |          |                           |
| WELCOMING MAIN OFFICE                               |                                  |                                 |          |                         |                                   |                         |                          |                      |                              |                             |                                   |             |          |                     |          |                           |
| HEALTH SERVICES SPACE                               |                                  |                                 |          |                         |                                   |                         |                          |                      |                              |                             |                                   |             |          |                     |          |                           |
| FACILITIES FOR MEDIA CENTERS                        |                                  |                                 |          |                         |                                   |                         |                          |                      |                              |                             |                                   |             |          |                     |          |                           |
| FOOD SERVICE AND DINING                             |                                  |                                 |          |                         |                                   |                         |                          |                      |                              |                             |                                   |             |          |                     |          |                           |
| TECHNOLOGY SPACE                                    |                                  |                                 |          |                         |                                   |                         |                          |                      |                              |                             |                                   |             |          |                     |          |                           |
| STORAGE SPACE                                       |                                  |                                 |          |                         |                                   |                         |                          |                      |                              |                             |                                   |             |          |                     |          |                           |
| PLUMBING CORE                                       |                                  |                                 |          |                         |                                   |                         |                          |                      |                              |                             |                                   |             |          |                     |          |                           |
| INTERNAL CIRCULATION                                |                                  |                                 |          |                         |                                   |                         |                          |                      |                              |                             |                                   |             |          |                     |          |                           |
| <b>COMMUNITY / OFF-SITE</b>                         |                                  |                                 |          |                         |                                   |                         |                          |                      |                              |                             |                                   |             |          |                     |          |                           |
| COMMUNITY / OFF-SITE LEARNING SETTINGS              |                                  |                                 |          |                         |                                   |                         |                          |                      |                              |                             |                                   |             |          |                     |          |                           |
| JOINT-USE FACILITIES                                |                                  |                                 |          |                         |                                   |                         |                          |                      |                              |                             |                                   |             |          |                     |          |                           |
| CONNECTIONS BETWEEN SCHOOL SITES                    |                                  |                                 |          |                         |                                   |                         |                          |                      |                              |                             |                                   |             |          |                     |          |                           |
| <b>INTERIORS AND FINISHES</b>                       |                                  |                                 |          |                         |                                   |                         |                          |                      |                              |                             |                                   |             |          |                     |          |                           |
| FLEXIBLE / ADAPTABLE SPACE                          |                                  |                                 |          |                         |                                   |                         |                          |                      |                              |                             |                                   |             |          |                     |          |                           |
| SIGNAGE AND DISPLAY                                 |                                  |                                 |          |                         |                                   |                         |                          |                      |                              |                             |                                   |             |          |                     |          |                           |
| EXPERIENTIAL INTERIORS                              |                                  |                                 |          |                         |                                   |                         |                          |                      |                              |                             |                                   |             |          |                     |          |                           |
| FURNITURE AND FINISHES FOR LEARNING                 |                                  |                                 |          |                         |                                   |                         |                          |                      |                              |                             |                                   |             |          |                     |          |                           |
| <b>SITE</b>   |                                  |                                 |          |                         |                                   |                         |                          |                      |                              |                             |                                   |             |          |                     |          |                           |
| SAFE AND ACCESSIBLE                                 |                                  |                                 |          |                         |                                   |                         |                          |                      |                              |                             |                                   |             |          |                     |          |                           |
| TRAFFIC CONTROL                                     |                                  |                                 |          |                         |                                   |                         |                          |                      |                              |                             |                                   |             |          |                     |          |                           |
| PARKING AND SERVICE ACCESS                          |                                  |                                 |          |                         |                                   |                         |                          |                      |                              |                             |                                   |             |          |                     |          |                           |
| LANDSCAPE CHARACTER                                 |                                  |                                 |          |                         |                                   |                         |                          |                      |                              |                             |                                   |             |          |                     |          |                           |
| SAFE, ACCESSIBLE, AND INCLUSIVE OUTDOOR PLAY        |                                  |                                 |          |                         |                                   |                         |                          |                      |                              |                             |                                   |             |          |                     |          |                           |
| OUTDOOR LEARNING SETTINGS                           |                                  |                                 |          |                         |                                   |                         |                          |                      |                              |                             |                                   |             |          |                     |          |                           |
| PLANNED EXPANSION                                   |                                  |                                 |          |                         |                                   |                         |                          |                      |                              |                             |                                   |             |          |                     |          |                           |
| PERMANENT FACILITIES                                |                                  |                                 |          |                         |                                   |                         |                          |                      |                              |                             |                                   |             |          |                     |          |                           |
| <b>SYSTEMS</b>                                      |                                  |                                 |          |                         |                                   |                         |                          |                      |                              |                             |                                   |             |          |                     |          |                           |
| QUALITY HVAC / PLUMBING                             |                                  |                                 |          |                         |                                   |                         |                          |                      |                              |                             |                                   |             |          |                     |          |                           |
| AMPLE ELECTRICAL SERVICE SYSTEMS AND LIGHTING       |                                  |                                 |          |                         |                                   |                         |                          |                      |                              |                             |                                   |             |          |                     |          |                           |
| TECHNOLOGY INFRASTRUCTURE AND HARDWARE              |                                  |                                 |          |                         |                                   |                         |                          |                      |                              |                             |                                   |             |          |                     |          |                           |
| TECHNOLOGICALLY ENHANCED SYSTEMS                    |                                  |                                 |          |                         |                                   |                         |                          |                      |                              |                             |                                   |             |          |                     |          |                           |

# Top Priorities of CDT:

- Rebuild Lake Elmo Elementary as TWO schools or 450-660 students
- Expand Brookview Elementary
- Utilize Oak Park as multi- purpose center
  - ALC, CSB and Bridge Transitions
- Remodel Stonebridge Elementary
- Sell Withrow and CSB



|  |  |
|--|--|
| <b>Lake Elmo</b>                           |  |
| Rebuild as two 450-650 schools             |  |
| <b>Brookview Elementary</b>                |  |
| Expand to 630 students                     |  |
| <b>Oak Park Building</b>                   |  |
| As multi-purpose center (ALC, TP, CS):     |  |
| <b>Stonebridge Elementary</b>              |  |
| Cluster Upgrades                           |  |
| Media Center and Open Classroom Upgrades   |  |
| <b>Central Services</b>                    |  |
| Sell                                       |  |
| <b>Withrow</b>                             |  |
| Sell                                       |  |
| <b>Oak-Land Middle School</b>              |  |
| Gym&Music Wing Additon Flex/Media Center   |  |
| Daylight and Sound upgrades                |  |
| <b>Lily Lake Elementary</b>                |  |
| Bathroom and SpecialEd Remodel             |  |
| New Flex Space                             |  |
| Open Classroom Remodel                     |  |
| <b>Stillwater High School</b>              |  |
| Auditorium Addition                        |  |
| Flex and Admin upgrades                    |  |
| <b>Southern ECFC</b>                       |  |
| 30,000 SF at Oak Land or other site        |  |
| <b>Afton Lakeland Elementary</b>           |  |
| Flex space                                 |  |
| Gym addition and Media Center Upgrade      |  |
| <b>Andersen Elementary</b>                 |  |
| Upgrade of Media Center                    |  |
| <b>Stillwater Middle School</b>            |  |
| Flex/Media Central "Heart"                 |  |
| Library Remodel, Daylight & Sound Upgrades |  |
| <b>Rutherford Elementary</b>               |  |
| Upgrade of Media Center                    |  |

# Lake Elmo Elementary Replacement:



- Replace on TWO locations each expandable from 450 to 650 students
- Use current building during construction

## Cost estimate as of 2/2020

- New 450 student school at LE site (obtain land north of site): \$40.5M
- Full remodel of existing LE site: \$33.5M
- New school at Oak-Land site: \$36.7M
- New 900 student elementary on site TBD: \$68.5M

**HIGHEST PRIORITY, DO IT AS SOON AS POSSIBLE**



# Brookview Elementary:

New Capacity: 650



- Expand from 450 to 650 students

**Cost estimate as of 2/2020**

- 8 classrooms: \$6.2M

**HIGHEST PRIORITY, DO IT AS SOON AS POSSIBLE**

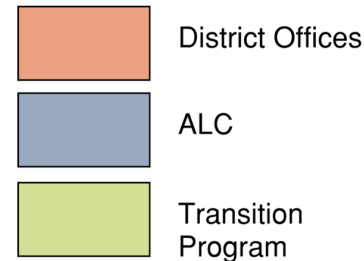
# Oak Park Building:



- Do not reopen as elementary
- Utilize Oak Park School for Transition Program, ALC and Central Services

**Cost estimate as of 2/2020**

- \$10.33M



**HIGH PRIORITY**

# Stonebridge Elementary:



- Special Education Cluster Upgrades
- Media Center and 3-Grade Upgrade, Daylighting
- Open Classroom Upgrade into Next Century Learning Environment

Cost estimate as of 2/2020

- **\$7.33M**

**HIGH PRIORITY**



## Withdraw:

- Operation costs: \$40 -75k/year
- Sell

HIGH PRIORITY



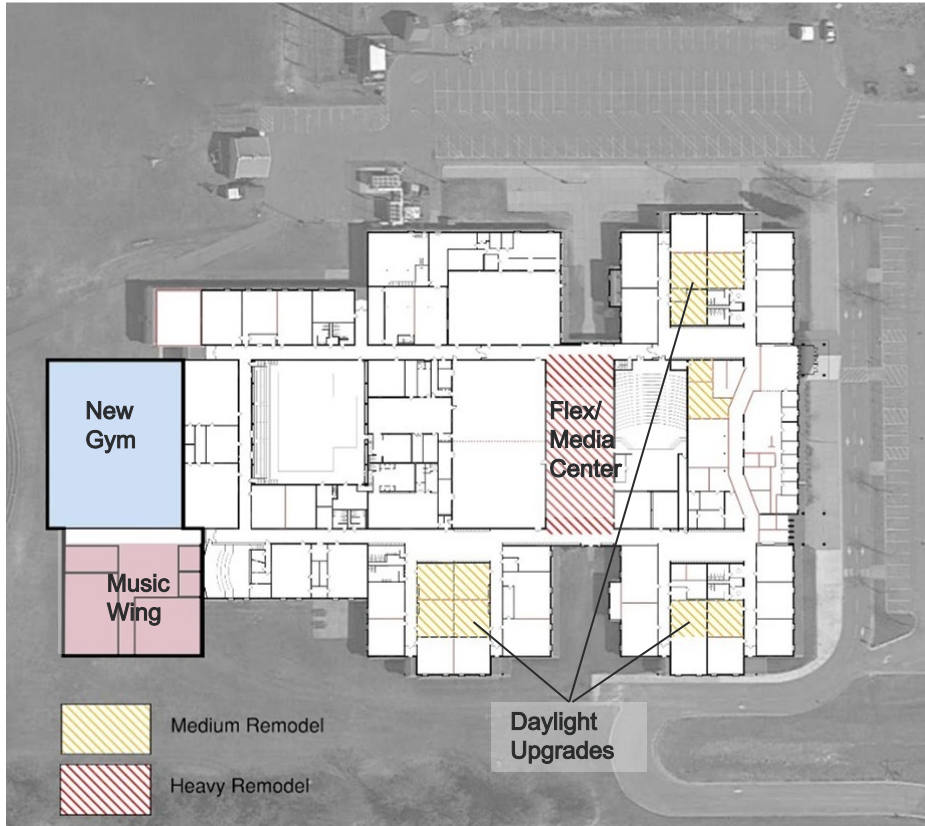
## Central Services:

- Sell Building and Move Administration to Oak Park.
- Use the proceeds towards Oak Park renovation.

HIGH PRIORITY



# Oak-Land Middle School:



- Music and Gym Additions
- Daylight upgrades

**Cost estimate as of 2/2020**

- Additions: \$9.9M
- Daylight upgrades: \$2.32M

**MEDIUM PRIORITY**

# Lily Lake Elementary:



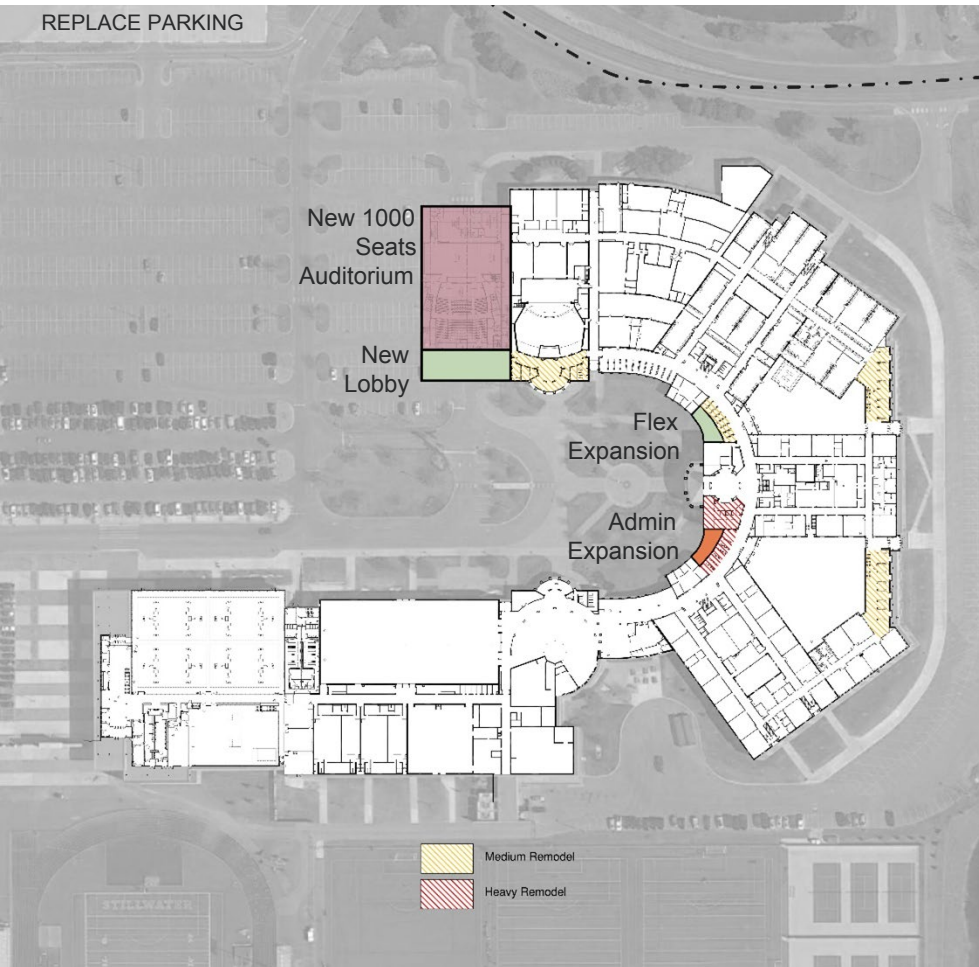
- Bathroom Remodel, Special Ed Upgrades, New Flex Space
- Open Classroom Remodel, Cafeteria Remodel, New Music Room
- Media Center Upgrade

**Cost estimate as of 2/2020**

- Addition: \$3.2M
- Upgrades: \$8.1M

**MEDIUM – LOW PRIORITY**

# Stillwater Area High School:



- 1,000 Seat Auditorium Addition
- Administration, Entry Space and Security Upgrades.
- Flex Spaces throughout

**Cost estimate as of 2/2020**

- Theater: \$17.7M
- Other upgrades: \$4.5M

**MEDIUM PRIORITY**

# Southern Early Childhood Family Center



- Provide Early Childhood programs for southern portion of district

## Cost estimate as of 2/2020

- Build center on existing district site (OMS or new elementary): \$9.6M
- Build center on new site TBD: \$10.1M to \$18.6M

**MEDIUM PRIORITY**



# Afton-Lakeland Elementary:



- Gym addition
- Extra space (Flex)
- Media Center Upgrade

**Cost estimate as of 2/2020**

- \$6M

**MEDIUM PRIORITY**



# Andersen Elementary:



- Update of Media Center
- Manage as two sections

**Cost estimate as of 2/2020**

- \$1.1M

**LOW PRIORITY**

# Stillwater Middle School:



- Flex / Media Center Space
- Library Remodel,
- Daylight and Sound Upgrades

**Cost estimate as of 2/2020**

- \$10.9M

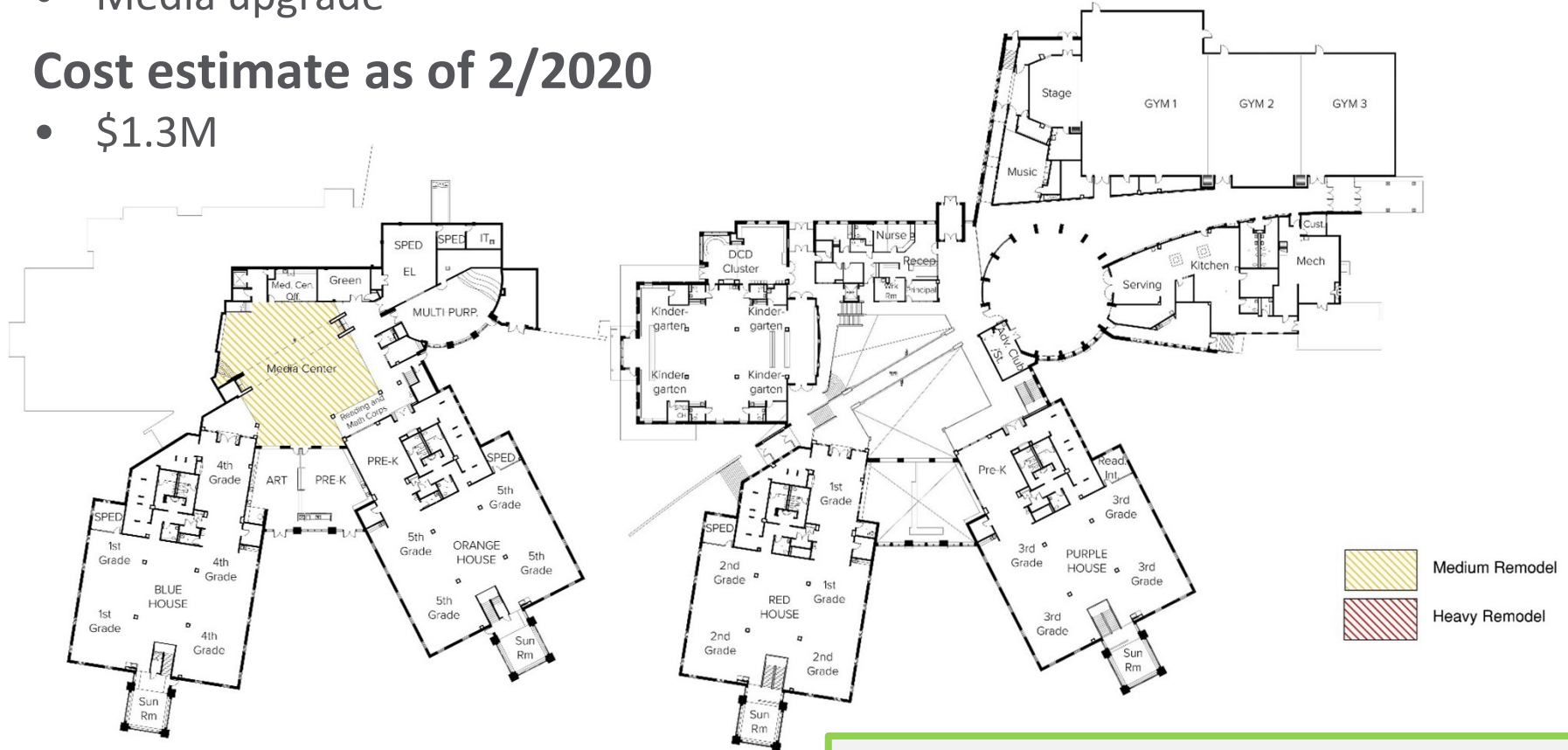
**LOW PRIORITY**

# Rutherford Elementary:

- Media upgrade

Cost estimate as of 2/2020

- \$1.3M



LOW PRIORITY

# Existing Early Childhood Family Center:

- No change



# Overview of Referendum Timeline

## November - December 2020

- Hire referendum consultants (Municipal Advisor, Architect, Construction Manager, Community Engagement)

## January - February 2021

- Consider district needs and identify possible bond and levy options
- Create baseline of bond projects (schematics) and cost projections
- Gather community feedback and gauge support

## March - April 2021

- Consider tax impact and prioritize bond and levy options
- Develop budgets and schedules for bond projects

## May 2021

- Board approval of bond and levy packages

## June-July 2021

- Board authorization for drafting of the Review and Comment
- Develop Review & Comment for Minnesota Department of Education (MDE)

## Summer 2021

- Submit Review and Comment and allow 70 days for MDE review and acceptance
- Approve ballot language for referendum questions

## September - Election Day 2021

- Informational Campaign

# **School Board Discussion**