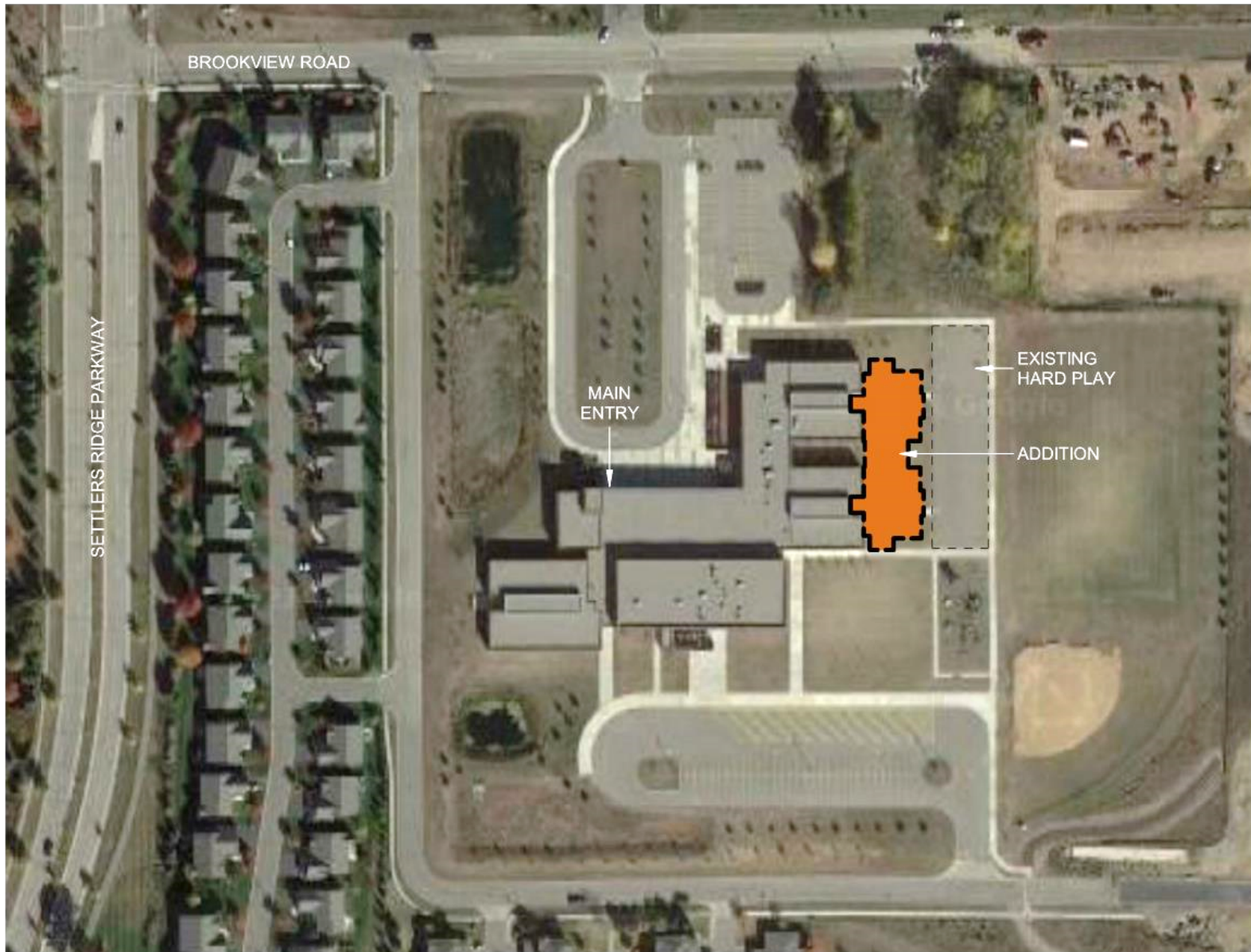


Brookview Elementary School Addition

August 12, 2021 School Board Update

SITE DIAGRAM



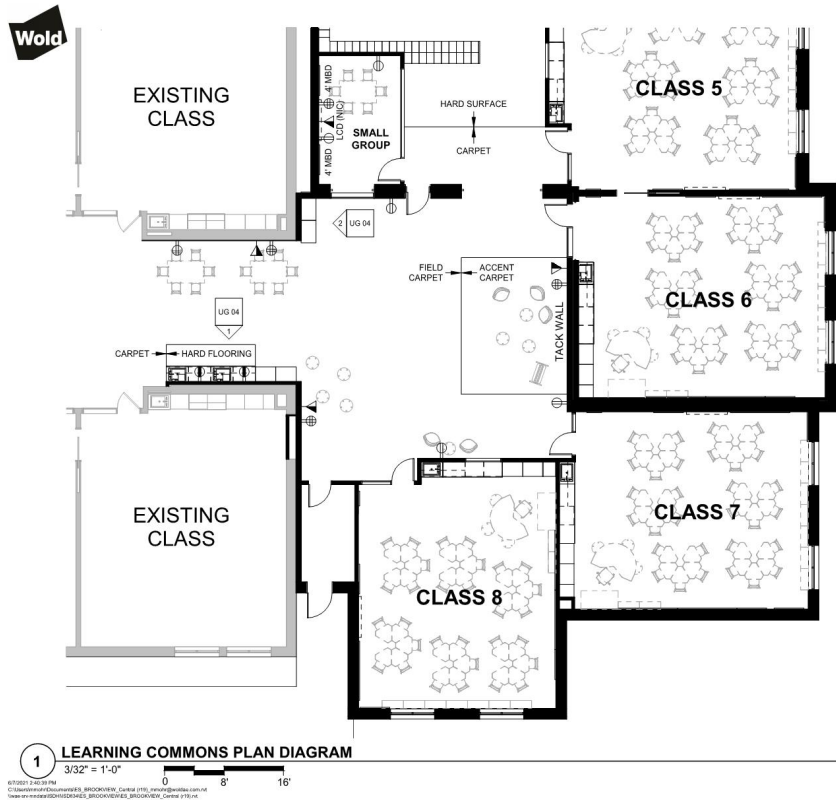
ADDITION PLAN DIAGRAM



User Group Process:

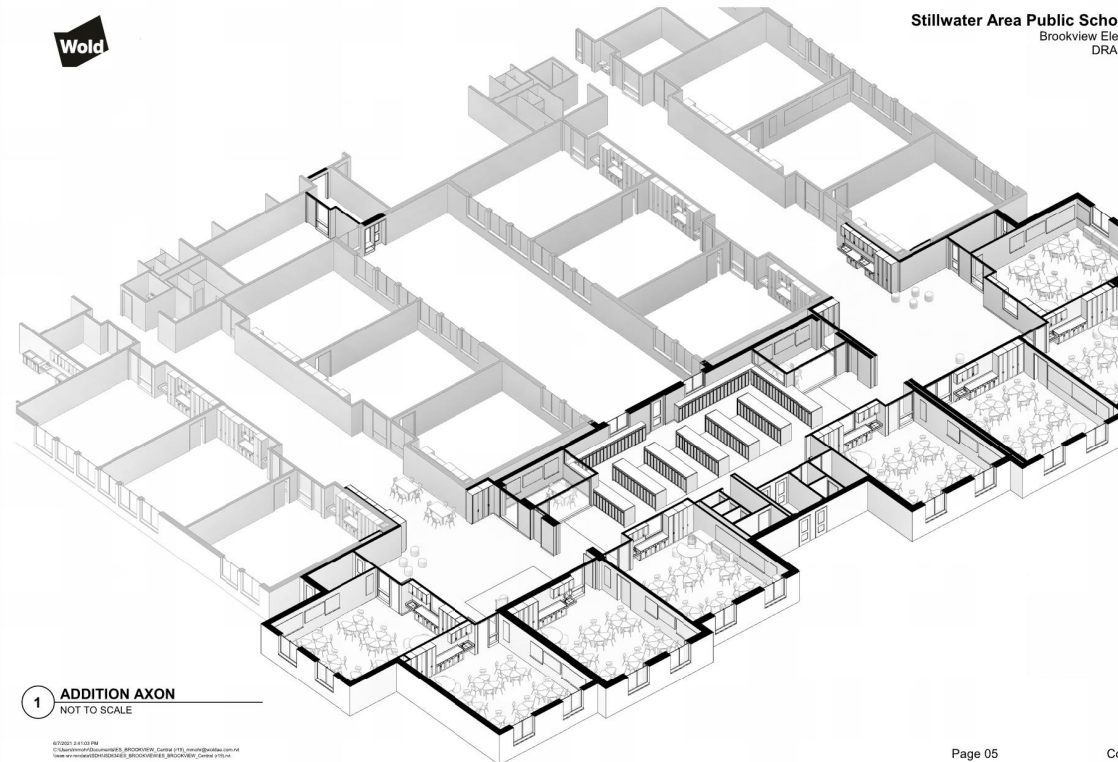
- Series of meetings to dig into the fine details of every space in the project.
- Involves educators and other stakeholders in the design process
- Helps confirm what works and doesn't work in the design from the teaching perspective
- Gives Staff Ownership in the decisions and the final design
- The goal of this input is to ensure that the space is accepted and valued by the staff when they move in

STAFF INVOLVEM



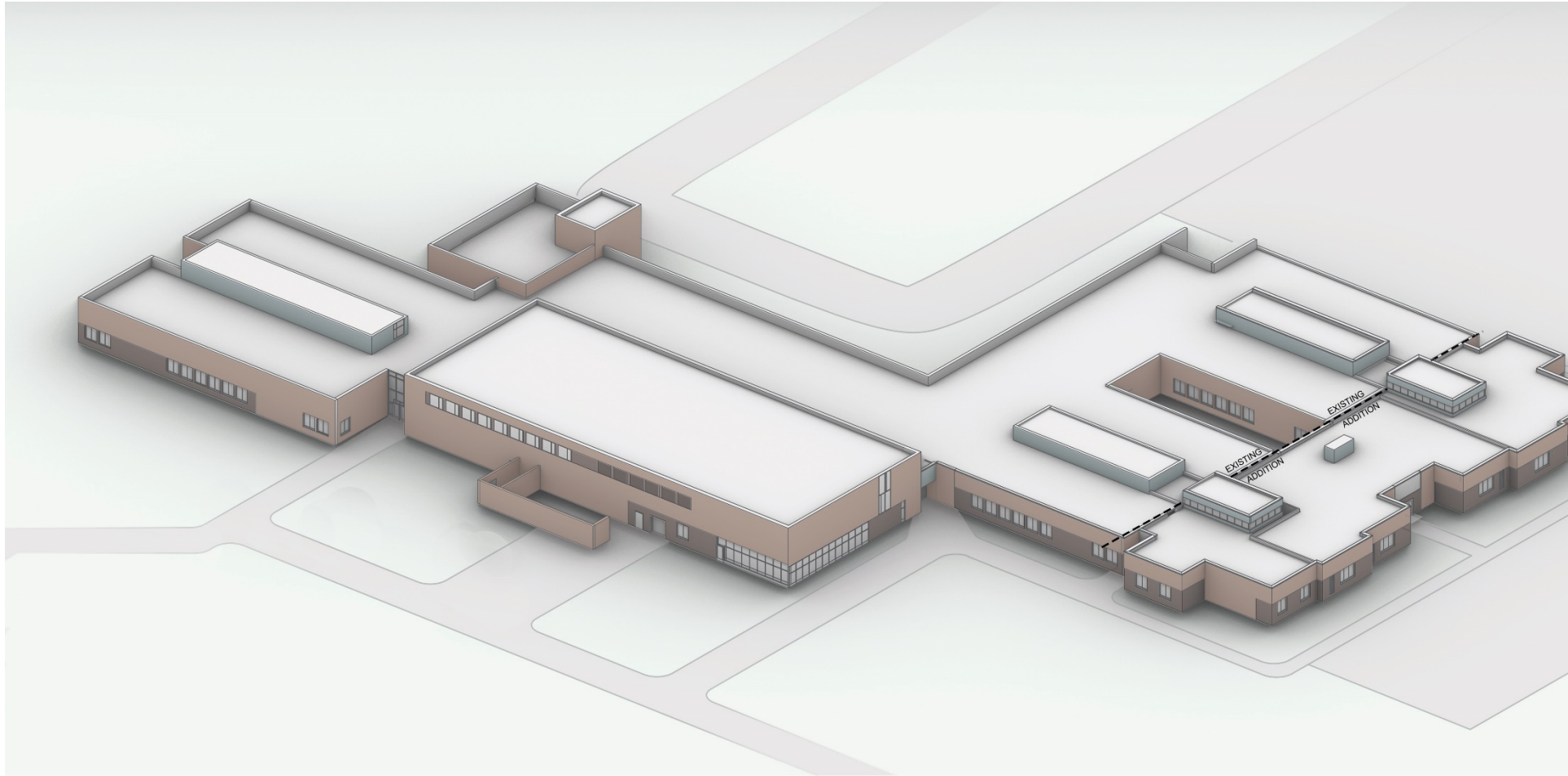
Stillwater Area Public Schools ISD #834
Brookview Elementary Addition
DRAFT: June 8, 2021

NOTES:



LEARNING COMMONS

AXONOMETRIC V



 DARK BRICK

 LIGHT BRICK

 METAL PANEL







TYPICAL NEW CLASSROOM



NEW NORTH LEARNING COMM



NEW NORTH LEARNING COMMONS CONNECT



NEW SOUTH LEARNING COMM



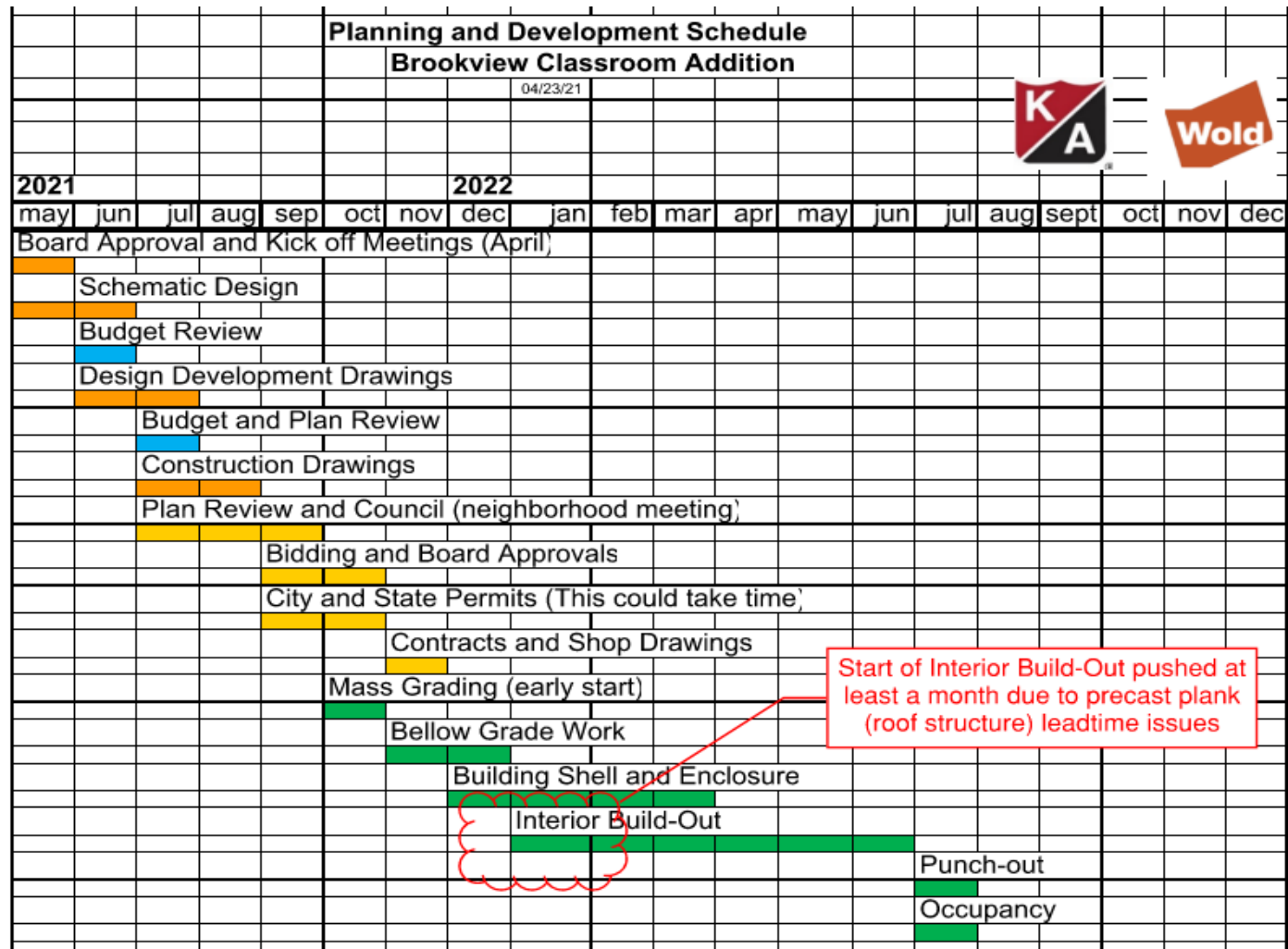
NEW SOUTH LEARNING COMM



NEW LOCKER COMM



PROJECT SCHEDULE



Overall Project Budget \$6,921,666

- Construction Budget of \$6,199,203
(Precast plank procured through competitive proposals to improve delivery time)
- Soft Cost Budget (A/E, Survey, Borings, Permits, Testing, etc.) of \$722,463
- (FF&E) Furniture, Fixtures and Equipment are not included in the Project Bud

THANK YOU!